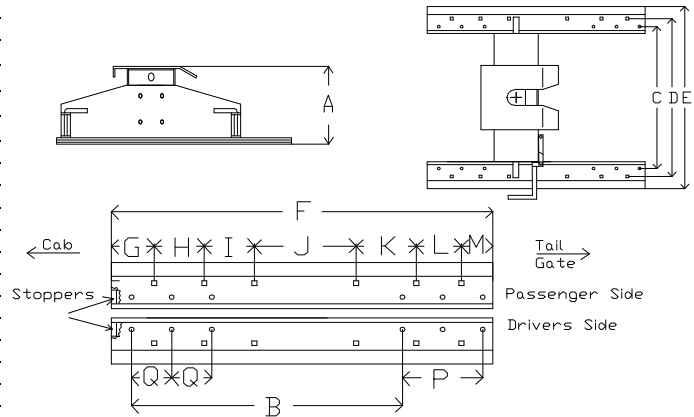


Hitch application	Product Description	Rating		Parts Reference			
		G.T.W.	Vertical Load	Crossbar	H-Bracket	Sides	Sides
72994	24" Dual Position Original (DPO)	17,000 lbs/7,728 kg	4,250 lbs/1,932kg	73101	73202	S3980 (Box incl. 2 x 73301, 1 x 73853)	
72995	35" Dual Position Original (DPO)	17,000 lbs/7,728 kg	4,250 lbs/1,932kg	73102	73201	S3980 (Box incl. 2 x 73301, 1 x 73853)	
72998	35" Dual Position Original (DPO)	20,000 lbs/9,091 kg	5,000 lbs/2,273 kg	73103	73201	S3980 (Box incl. 2 x 73301, 1 x 73853)	
72996	24" Dual Position Easy Level (DPEL)	17,000 lbs/7,728 kg	4,250 lbs/1,932kg	73101	73203	S3980 (Box incl. 2 x 73301, 1 x 73853)	
72997	35" Dual Position Easy Level (DPEL)	17,000 lbs/7,728 kg	4,250 lbs/1,932kg	73102	73204	S3980 (Box incl. 2 x 73301, 1 x 73853)	
72999	35" Dual Position Easy Level (DPEL)	20,000 lbs/9,091 kg	5,000 lbs/2,273 kg	73103	73204	S3980 (Box incl. 2 x 73301, 1 x 73853)	
72991	24" Dual Position Double Tilt (DPDT)	17,000 lbs/7,728 kg	4,250 lbs/1,932kg	73151	73215	S3950 (Box incl. 2 x 73306, 1 x 73859)	
72990	35" Dual Position Double Tilt (DPDT)	17,000 lbs/7,728 kg	4,250 lbs/1,932kg	73151	73216	S3950 (Box incl. 2 x 73306, 1 x 73859)	

DSP Dual Position Fifth Wheel Hitches when assembled (General Information)

Information	Ref.	DPO	DPEL	DPDT
Maximum height setting	A	18.5"	18.5"	18.5"
2nd highest setting	A	17.5"	17.5"	17.5"
3rd highest setting	A	16.5"	16.5"	16.5"
Minimum height setting	A	15.5"	15.5"	15.5"
Side bracket pin to pin (length)	B	27"	27"	27"
Side bracket bolt pattern	-	2.5" x 5"	2.5" x 5"	3.5" x 4"
Side bracket bolt diameter	-	1/2"	1/2"	1/2"
Bed rail length	F	38"	38"	38"
Bed rail pin separation (width)	C	24" FW = 27.5"	35" FW = 38.5"	
Bed rail pin hole separation (front to back holes)	P-Q	P = 8" Q = 4"		
Bed rail carriage bolt hole separation (front to back holes)	G-M	1 2 3 4 5 6	14" 24" 29" 35"	
Bed rail car. bolt separation (width)	D	24" FW = 31.5"	35" FW = 42"	
Bed rail top to floor	-	1.25"	1.25"	1.25"
Bed rail carriage bolt diameter	-	0.5"	0.5"	0.5"



1. Assembly of the Fifth Wheel Hitch

Calculate the desired height of the fifth wheel hitch (see reference A). Important: There should be at least 5-1/2" clearance between the lowest point of the trailer and the top of the truck box to avoid damage to both truck and/or trailer.

Attach the h-bracket to the sides (locking pins on the bottom of the sides pointed to the outside) with four (4) fasteners per side using the supplied 1/2 x 1-1/4" hex bolts, 1/2" lock washers and 1/2" hex nuts. Tighten fasteners to torque specifications below.

Original Model (DPO): Carefully place crossbar into yoke ("v" shaped bracket) on h-bracket and use supplied quick pins to secure in place.

Easy Level Model (DPEL): Remove quick pins from the lock-out on h-bracket. Carefully place crossbar into spring loaded yoke bolt assembly and secure in place with supplied quick pins from bolt pack. Re-install the lock-out quick pins into the open (upper hole) position. This will ensure that the spring loaded h-bracket is ready to assist in coupling the trailer. Once the trailer is connected, drive to level ground and move the lock-out quick pins into the locked position (lower hole). This will restrict the spring loaded device from movement after coupling is complete. For uncoupling, move the lock-out quick pins into the open position while on level ground and proceed to drive to your final destination (short distance only!). IMPORTANT: Only travel with your spring loaded h-bracket in the open position for short distances. Continued travel in the open position will put too much wear and tear on your travelling system and can damage your truck, trailer and/or hitch, therefore voiding the warranty of your fifth wheel hitch system.

Double Tilt Model (DPDT): Remove the crossbar pivot pin from the h-bracket. DO NOT remove the orange stoppers on the h-bracket or the bottom of the crossbar as they are a crucial part of the hitch system. Carefully place the double tilt crossbar onto the h-bracket and secure by re-installing the crossbar pivot pin and lynch pin.

Your fifth wheel hitch is now ready to slide into the DSP fifth wheel rail system. Lift all four (4) lock-out pins on the side brackets into the open position and place on rest. Slide into rails and drop lock-out pins into rails, securing the fifth wheel hitch into the desired position for coupling. Swivel lock-out pins under the rest and secure pins with supplied hair pin clips.

When moving hitch from one pin hole position on the bed rails to another (with trailer attached), lift all four (4) lock-out pins onto rests, move truck forward or backwards by 1" (depending on desired hole position change). Lower all four (4) pins and move truck into desired direction until pins pop into rail holes. Swivel pins under rest and secure in place with hair pin clips.

2. Coupling/Uncoupling

2a) Coupling: Remove hair pin clip and clevis pin from the crossbar handle lock-out. Pull handle into open position and back the truck into the fifth wheel king pin until the king pin hits the automatic closing device. Once the king pin is enclosed, secure the handle with clevis pin and hair pin clip.

2b) Uncoupling: Remove hair pin clip and clevis pin from handle lock-out. Pull handle open and secure it in the open position with the lynch pin and hair pin clip to prevent spontaneous closing while the truck is moving away from the fifth wheel trailer.

3. Storage and Maintenance

After uncoupling, remove hair pin clip and clevis pin from handle lock. Pull the manual closing hook (s-shaped hook on the back of the crossbar) to close the locking device. Lock out handle with clevis pin and hair pin clip. **WARNING: Do not attempt to close the fifth wheel hitch by hitting the automatic closing device with anything but your fifth wheel king pin. This may cause injury!**

Check all fasteners before every use.

Prevent rust by regular cleaning and/or painting of parts.

Excessive wear from direct contact between the king pin and the crossbar due to no lubrication is considered misuse! Use either a 3/16 Teflon grease free disc (preferred as less messy) or graphite spray for lubrication.

Important: For DSP dual position bed rail installation instructions, please refer to vehicle specific installation instructions (series 73700).

Item#	Description	Ship. Weight	Ship. Dimens. in inch	Tools Required	DPO to DPEL Upgrade Parts List
73101	24" Crossbar 17,000 DPO/DPEL	58.6 lbs	37 x 15 x 5	3/4" Wrench and Socket & 100 FT Torque Wrench	73203 24" H-Bracket DPEL
73102	35" Crossbar 17,000 DPO/DPEL	71.4 lbs	43 x 15 x 5	Contents of Bolt Pack DPO/DPEL #73853	73204 35" H-Bracket DPEL
73103	35" Crossbar 20,000 DPO/DPEL	78.2 lbs	43 x 15 x 5	8 Hex Bolt 1/2 X 1-1/4, Grade 5 UNC Plated	Replacement Parts List
73151	24"/35" Crossbar 17,000 DPDT	45 lbs	29 x 15 x 6	8 Lock Washer 1/2, Grade 5, UNC, Plated	73833 DPDT Crossbar Pivor Pin 9"
73201	35" H-Bracket DPO	25.2 lbs	42 x 16 x 5.3	8 Hex Nut 1/2, Grade 5, UNC, Plated	73832 DPDT H-Bracket Pivot Pin 3-3/4"
73202	24" H-Bracket DPO	21.8 lbs	31.5 x 16 x 6.5	4 Hair Pin Clip #9 (Class III) 5/32"x3-5/16"	73824 DPDT Orange Stopper (3 Pk)
73203	24" H-Bracket DPEL	26.8 lbs	31.5 x 16 x 6.5	2 Quick Pin Square 3/8 x 2-1/4	73853A DPEL Yoke Bolt Replacement
73204	35" H-Bracket DPEL	29.6 lbs	42 x 16 x 5.3	Contents of Bolt Pack DPDT #73859	73107 DPO/DPEL 24" Crossbar Spring 5-1/2"
73215	24" H-Bracket DPDT	41.2 lbs	31.5 x 16 x 6.5	8 Hex Bolt 1/2 X 1-1/4, Grade 5 UNC Plated	73106 DPO/DPEL 35" Crossbar Spring 7-1/2"
73216	35" H-Bracket DPDT	48.2 lbs	42 x 16 x 5.3	8 Lock Washer 1/2, Grade 5, UNC, Plated	73822 Rubber Handle 17K
S3950	Side Brackets DPDT with Bolt Pack	39.8 lbs	29.5 x 12 x 5	8 Hex Nut 1/2, Grade 5, UNC, Plated	73823 Rubber Handle 20K
S3980	Side Brackets DPO/DPEL with Bolt Pack	38 lbs	29.5 x 12 x 5	4 Hair Pin Clip #9 (Class III) 5/32"x3-5/16"	73307 Side Pin/Spring Set 4 PK

Bolt Size	Grade 5 Torque	Metric	Grade 8.8 Torque
9/16	110 Ft. Lb	8 mm	18 Ft. Lb.
7/16	54 Ft. Lb	10 mm	36 Ft. Lb.
1/2	72 Ft. Lb.	12 mm	75 Ft. Lb.
5/8	150 Ft. Lb	14 mm	103 Ft. Lb.
3/4	245 Ft. Lb		

Warning: Check Fasteners annually or before usage, if the hitch is damaged replacement may be necessary. Do Not exceed hitch manufactures hitch ratings listed above. DO NOT drill or alter this product. This product is only intended for the application listed above, see vehicle owner's manual for maximum towing capacity (GVWR). This product is intended for usage with the correct towing accessories and not to be used with tow ropes, cables, chains or any type of stretch or elastic rope.

DSP Hitches are manufactured by Diversified Steel Products MFG. LTD Edmonton Alberta, Canada. For more information on DSP and DSP products call 1-800-265-3377 or visit us at www.dspatches.com