

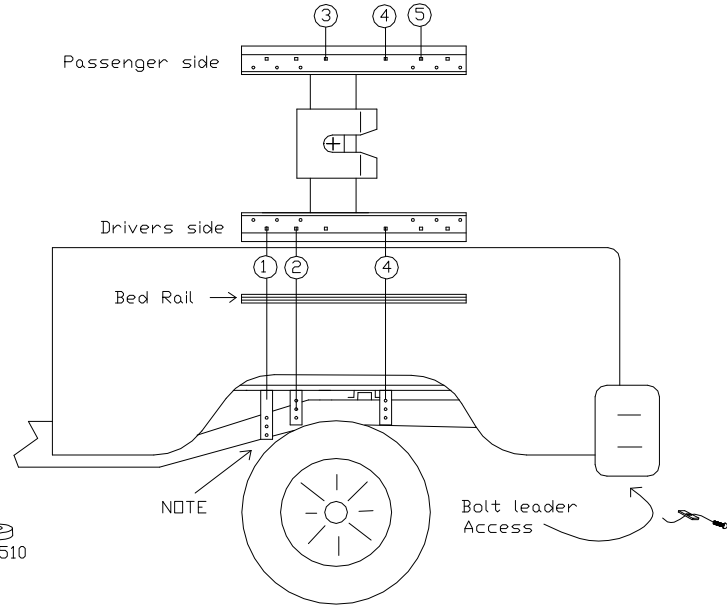
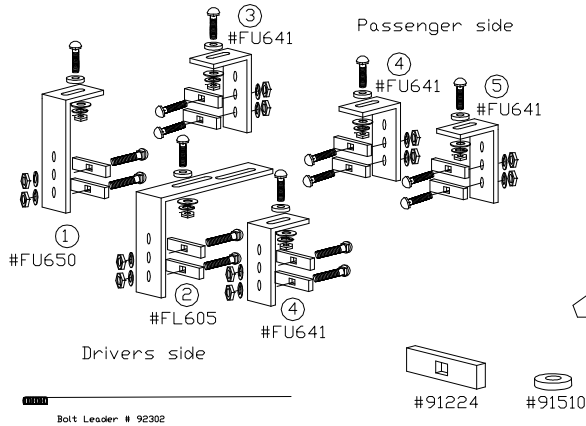
**73775**

**Frame Bracket Kit for DSP  
 35" DP FW & GN Hitches**

<b>IMPORTANT: The bracket/hole placement is a suggestion. Frames vary! Always check the frame prior to drilling if this is the best location for the brackets. If the suggested holes are not ideal, move to the next closest hole.</b>			Measurement end of rail to end of box			Frame Bracket placement by hole number (see drawing below)
			Comp. box	Short box	Long box	
Hitch application	Notes	Years	6.2'	6.5'	8'	
Nissan Titan	All (tube frame)	2004 - cur	see notes	20" <sup>2</sup>	20" <sup>2</sup>	Passenger: FU641 - 3, 4, 5 Driver: FU650 - 1, FL610 - 2, FU641 - 4

NOTE #1: Can be installed on compact box. Must be used with 10" King Pin extension or with the Reese Sidewinder use the  
 NOTE #2: Place center of king pin 1"-2" ahead of the axle when in travel position (closest to cab).

#73775



\* At any point during installation, ensure that once placement is made, there are NO lines or wires interfering prior to drilling.

Parts List	Contents of Bolt Pack # 73775/B	Tools Required
1 FL610 FRAME BRACKET	6 Carriage Bolt 1/2 x 3	3/4" Wrench and Socket
4 FU641 FRAME BRACKET	12 Carriage Bolt 1/2 x 1 1/2	3/4" Socket:
1 FU650 FRAME BRACKET	18 Hex Nut 1/2, Grade 5, UNC, Plated	Universal (knuckle) joint
1 Bolt Pack # 73775/B	18 Lock Washer 1/2", Grade 5, Plated	12" Socket Extension
1 DSP Warranty Card	6 Flat Washer 1/2, Plated	Drill Bits:
1 Instructions F70000 Series	12 SPACER 1/2" SQ HOLE, 2-3/4"L x 3/4" W 1/4"MAT	9/16 or step drill bit
Ship 19.8 Lbs.	6 SPACER 1 1/4" ROUND HOLE MATERIAL 3/8"	3/16 or 1/4 (for pilot hole)
Weight 9 Kg.	2 Bolt Leader 48"	100 FT Torque Wrench

**Bed Rail Placement:** 1) Follow the general installation guidelines for the assembly of the upper half of hitch system of your choice that is included with the system. The rails have a closed end and an open end (to slide the hitch in and out). Place closed end near cab. Slide the hitch into rails and lock in travel position (closest to end of the rail near cab). Place system with rails in the truck box and use measurements above as a guideline. Center hitch in between wheel wells. This installation recommends the use of a set of two (2) bed rail rib spacers #73551P. Rib spacers keep the rail level during installation and usage of the hitch. Place rib spacers between box and rails. **Note:** For best results for the installation of gooseneck hitches, install or use a fifth wheel hitch as a template or refer to the measurements under general "Gooseneck Hitch" installation guidelines.

**Frame Bracket Placement:** 2) Drill pilot hole through the box (see chart above). Check if there are any obstructions for the placement of the brackets. Drill 9/16" hole through box, drop 1/2x3" carriage bolts through holes in both rails. Place spacer 91510 on each carriage bolt on the underside of the truck and hold the frame bracket up to the frame and carriage bolt. Fasten with flat washer, lock washer and hex nut. Hand tighten the bolts in place. A knuckle joint and socket extension will be required. NOTE: Driver's side bracket hole 1 may require the shortening of the bracket depending on your truck model.

3) Using the frame bracket as a template, drill pilot holes into the outer wall of frame. WARNING: DO NOT DRILL THROUGH BOTH WALLS OF THE TUBE FRAME! Increase the hole size with the 9/16" drill bit or step drill bit. Install all brackets near the cab first and work your way towards the back.

4) Locate the main access hole on the end of the frame behind the bumper. (Some other access hole may be found on the frame.) Using the supplied bolt leader, fishwire 1/2x1-1/2" carriage bolt with spacer #91224 inside the frame to the desired hole. Secure all bolts with lock washer and hex nut. Repeat with all remaining frame brackets. Tighten fasteners to torque specification below. A knuckle joint and socket extension will be required.

Bolt Size	Grade 5 Torque	Metric	Grade 8.8 Torque
9/16	110 Ft. Lb	8 mm	18 Ft. Lb.
7/16	54 Ft. Lb	10 mm	36 Ft. Lb.
1/2	72 Ft. Lb.	12 mm	75 Ft. Lb.
5/8	150 Ft. Lb	14 mm	103 Ft. Lb.
3/4	245 Ft. Lb		

Maximum torque for weld or weld nuts is 38 FT/Lb

**Warning: Check Fasteners annually or before usage, if the hitch is damaged replacement may be necessary**

Do Not exceed hitch manufactures hitch ratings listed above, DO NOT drill or alter this product. This product is only intended for the application listed above, see vehicle owner's manual for maximum towing capacity (GVWR). This product is intended for usage with the correct towing accessories and not to be used with tow ropes, cables, chains or any type of stretch or elastic rope.