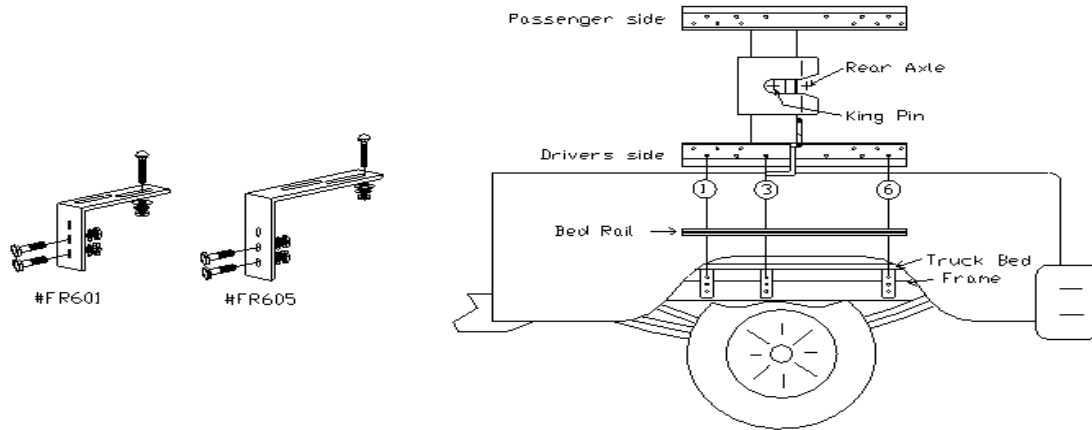


IMPORTANT: The bracket/hole placement is a suggestion. Frames vary! Always check the frame prior to drilling if this is the best location for the brackets. If the suggested holes are not ideal, move to the next closest hole.

Hitch application	Notes	Years	Measurement end of rail to end of box			Frame Bracket placement by hole number (see drawing below)
			Comp. box	Short box	Long box	
Chev Heavy Duty (new frame)	Ext, Reg, Quad Cabs	1999 - 2009	6.2'	6.5"	8"	FL605/FR605 - 1 & 3, FL601/FR601 - 6
Toyota Tundra	Ext, Reg, Quad Cabs	2000 - 2006	see notes	18"	23"	see notes
				25"	see notes	FL605/FR605 - 3 & 4, FL601/FR601 - 5

NOTE #1: Can be installed on compact box. Must be used with 10" King Pin extension or with the Reese Sidewinder use the RBW Wedge.

NOTE #2: Place center of king pin 1"-2" ahead of the axle when in travel position (closest to cab).



*** At any point during installation, ensure that once placement is made, there are NO lines or wires interfering prior to drilling.**

Parts List	Contents of Bolt Pack # 73808	Tools Required
2 FL605 Frame Bracket	6 Carriage Bolt 1/2 x 3, Grade 5, UNC, Plated	3/4" Wrench and Socket 100 FT Torque Wrench Drill and 1/2" Drill Bit
2 FR605 Frame Bracket	12 Flat Washer 1/2, Plated	
1 FL601 Frame Bracket	12 Hex Bolt 1/2 x 1 1/2, Grade 5, UNC, Plated	
1 FR601 Frame Bracket	18 Lock Washer 1/2", Grade 5, Plated	
1 Bolt Pack # 73808	18 Hex Nut 1/2, Grade 5, UNC, Plated	
1 DSP Warranty Card		
1 Instructions F70000 Series		
Ship Weight:	26.2 lbs. 14.1 kg.	

Bed Rail Placement: 1) Follow the general installation guidelines for the assembly of the upper half of hitch system of your choice that is included with the system. The rails have a closed end and an open end (to slide the hitch in and out). Place closed end near cab. Slide the hitch into rails and lock in travel position (closest to end of the rail near cab). Place system with rails in the truck box and use measurements above as a guideline. Center hitch in between wheel wells. This installation recommends the use of a set of two (2) bed rail rib spacers #73551P. Rib spacers keep the rail level during installation and usage of the hitch. Place rib spacers between box and rails. **Note:** For best results for the installation of gooseneck hitches, install or use a fifth wheel hitch as a template or refer to the measurements under general "Gooseneck Hitch" installation guidelines.

Bed Rail Mounting: 2) Centre the rails in the bed of the truck box with the measurements listed on the information chart above for long, short or compact boxes. From side to side using the rails as a template, *drill holes (see above chart) through the floor of the truck bed then drop the 1/2" x 3" Carriage Bolts into the holes.

Frame Bracket Placement and Mounting 3) Place the supplied brackets upon the bolts that were installed in the box in step 2. Note some brackets may be easier to place than others depending on their locations.

4) Once brackets are installed in the order they fit best, tighten all brackets to the box using the supplied fasteners. Once they are tightened, *drill holes using the bracket as a template. Make sure there are no lines or wires interfering during *drilling. After *drilling is complete install the 1/2" x 1 1/2" Hex Bolts to secure the brackets to the frame rails.

5) Tighten all mounting fasteners to the correct torque specifications listed below.

Bolt Size	Grade 5 Torque	Metric	Grade 8.8 Torque
9/16	110 Ft. Lb	8 mm	18 Ft. Lb.
7/16	54 Ft. Lb	10 mm	36 Ft. Lb.
1/2	72 Ft. Lb.	12 mm	75 Ft. Lb.
5/8	150 Ft. Lb	14 mm	103 Ft. Lb.
3/4	245 Ft. Lb		Maximum torque for weld or weld nuts is 38 FT/Lb

Warning: Check Fasteners annually or before usage, if the hitch is damaged replacement may be necessary

Do Not exceed hitch manufactures hitch ratings listed above, DO NOT drill or alter this product. This product is only intended for the application listed above, see vehicle owner's manual for maximum towing capacity (GVWR). This product is intended for usage with the correct towing accessories and not to be used with tow ropes, cables, chains or any type of stretch or elastic rope.

DSP Hitches are manufactured by Diversified Steel Products MFG. LTD Edmonton Alberta, Canada

For more information on DSP and DSP products call 1-800-265-3377 or visit us at www.dsphitches.com



Diversified Steel Products Mfg. Ltd.
 5645 - 92 Street
 Edmonton, AB T6E 3A4 Canada
 1 (800) 265-3377

73743

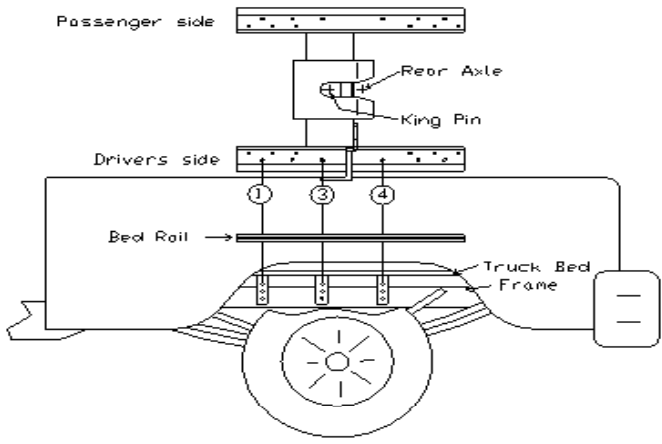
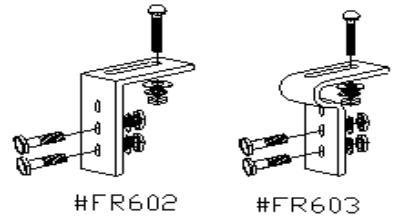
Frame Bracket Kit for DSP 35" DP FW & GN Hitches

IMPORTANT: The bracket/hole placement is a suggestion. Frames vary! Always check the frame prior to drilling if this is the best location for the brackets. If the suggested holes are not ideal, move to the next closest hole.

Hitch application	Notes	Years
Chev/ Gmc Drill Application	All models (classic body only)	88-98
Chev/ Gmc Drill Application	Heavy Duty (new body)	99-09
Chev/ Gmc Drill Application	Light Duty (classic body only)	99-09

Measurement end of rail to end of box			Bracket Placement By Hole Number
Long box 8'	Short box 6.5'	Compact box 6.2'	
23" ²	23" ²	see notes	FL603/FR603 - 1 & 3, FL602/FR602 - 4
23" ²	23" ²	see notes	FL602/FR602 - 1, FL603/FR603 - 3 & 4
23" ²	23" ²	see notes	FL603/FR603 - 1 & 3, FLR602/FR602 - 4

NOTE #1: Can be installed on compact box. Must be used with 10" King Pin extension or with the Reese Sidewinder use the RBW Wedge.
 NOTE #2: Place center of king pin 1"-2" ahead of the axle when in travel position (closest to cab).



*** At any point during installation, ensure that once placement is made, there are NO lines or wires interfering prior to drilling.**

Parts List	Contents of Bolt Pack # 73808	Tools Required
2 FL603 Frame Bracket	6 Carriage Bolt 1/2 x 3, Grade 5, UNC, Plated	3/4" Wrench and Socket 100 FT Torque Wrench Drill and 1/2" Drill Bit
2 FR603 Frame Bracket	6 Flat Washer 1/2, Plated	
1 FL602 Frame Bracket	12 Hex Bolt 1/2 x 1-1/2, Grade 5, UNC, Plated	
1 FR602 Frame Bracket	18 Hex Nut 1/2, Grade 5, UNC, Plated	
1 Bolt Pack # 73808	18 Lock Washer 1/2, Grade 5, Plated	
1 DSP Warranty Card		

Shipping weight: 17.8 lbs. / 8.1 kg.

Bed Rail Placement: 1) Follow the general installation guidelines for the assembly of the upper half of hitch system of your choice that is included with the system. The rails have a closed end and an open end (to slide the hitch in and out). Place closed end near cab. Slide the hitch into rails and lock in travel position (closest to end of the rail near cab). Place system with rails in the truck box and use measurements above as a guideline. Center hitch in between wheel wells. This installation recommends the use of a set of two (2) bed rail rib spacers #73551P. Rib spacers keep the rail level during installation and usage of the hitch. Place rib spacers between box and rails. **Note:** For best results for the installation of gooseneck hitches, install or use a fifth wheel hitch as a template or refer to the measurements under general "Gooseneck Hitch" installation guidelines.

Bed Rail Mounting: Centre the rails in the bed of the truck box with the measurements listed on the information chart above for long, short or compact boxes. From side to side using the rails as a template, *drill holes 1, 3, 4, through the floor of the truck bed then drop the 1/2" x 3" carriage bolts into the holes.

Frame Bracket Placement and Mounting: Place the supplied brackets upon the bolts that were installed in the box in step 2. Note some brackets may be easier to place than others depending on their locations.

Once brackets are installed in the order they fit best, tighten all brackets to the box using the supplied fasteners. Once they are tightened, *drill holes using the bracket as a template. Make sure there are no lines or wires interfering during *drilling. After *drilling is complete install the 1/2"x1-1/2" Hex Bolts to secure the brackets to the frame rails. Tighten all mounting fasteners to the correct torque specifications listed below.

Bolt Size	Grade 5 Torque	Metric	Grade 8.8 Torque
9/16	110 Ft. Lb	8 mm	18 Ft. Lb.
7/16	54 Ft. Lb	10 mm	36 Ft. Lb.
1/2	72 Ft. Lb.	12 mm	75 Ft. Lb.
5/8	150 Ft. Lb	14 mm	103 Ft. Lb.
3/4	245 Ft. Lb		

Maximum torque for weld or weld nuts is 38 FT/Lb

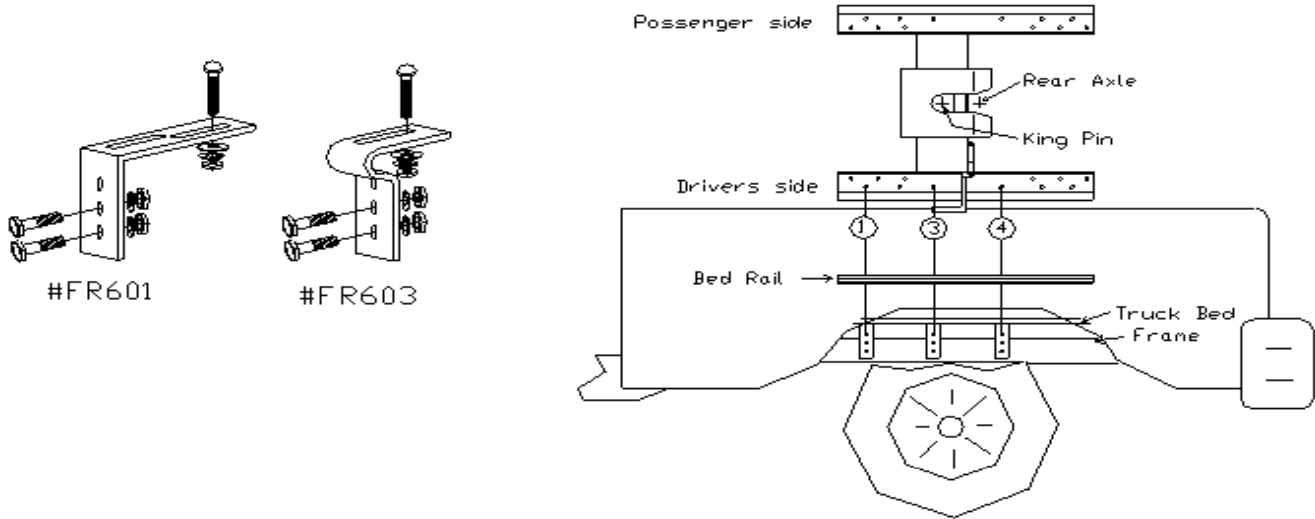
Warning: Check Fasteners annually or before usage, if the hitch is damaged replacement may be necessary
 Do Not exceed hitch manufactures hitch ratings listed above, DO NOT drill or alter this product. This product is only intended for the application listed above, see vehicle owner's manual for maximum towing capacity (GVWR). This product is intended for usage with the correct towing accessories and not to be used with tow ropes, cables, chains or any type of stretch or elastic rope.

DSP Hitches are manufactured by Diversified Steel Products MFG. LTD Edmonton Alberta, Canada
 For more information on DSP and DSP products call 1-800-265-3377 or visit us at www.dsphitches.com

73744
Frame Bracket Kit for DSP
35" DP FW & GN Hitches

IMPORTANT: The bracket/hole placement is a suggestion. Frames vary! Always check the frame prior to drilling if this is the best location for the brackets. If the suggested holes are not ideal, move to the next closest hole.			Measurement end of rail to end of box			Frame Bracket placement by hole number (see drawing below)
			Comp. box 6.2'	Short box 6.5'	Long box 8'	
Hitch application	Notes	Years	see notes	18" ²	23" ²	FL601/FR601 - 1, FL603/FR603 - 3 & 4

NOTE #1: Can be installed on compact box. Must be used with 10" King Pin extension or with the Reese Sidewinder use the RBW Wedge.
 NOTE #2: Place center of king pin 1"-2" ahead of the axle when in travel position (closest to cab).



Parts List		Contents of Bolt Pack # 73808	Tools Required
2	FL603 Frame Bracket	6 Carriage Bolt 1/2 x 3, Grade 5, UNC, Plated	3/4" Wrench and Socket 100 FT Torque Wrench Drill and 1/2" Drill Bit
2	FR603 Frame Bracket	6 Flat Washer 1/2, Plated	
1	FL601 Frame Bracket	12 Hex Bolt 1/2 x 1-1/2, Grade 5, UNC, Plated	
1	FR601 Frame Bracket	18 Hex Nut 1/2, Grade 5, UNC, Plated	
1	Bolt Pack # 73808	18 Lock Washer 1/2, Grade 5, Plated	
1	DSP Warranty Card		
1	Instructions F70000 Series		
Shipping weight:	20.8 lbs. 9.5 kg.		

Bed Rail Placement: 1) Follow the general installation guidelines for the assembly of the upper half of hitch system of your choice that is included with the system. The rails have a closed end and an open end (to slide the hitch in and out). Place closed end near cab. Slide the hitch into rails and lock in travel position (closest to end of the rail near cab). Place system with rails in the truck box and use measurements above as a guideline. Center hitch in between wheel wells. This installation recommends the use of a set of two (2) bed rail rib spacers #73551P. Rib spacers keep the rail level during installation and usage of the hitch. Place rib spacers between box and rails. **Note:** For best results for the installation of gooseneck hitches, install or use a fifth wheel hitch as a template or refer to the measurements under general "Gooseneck Hitch" installation guidelines.

Bed Rail Mounting: Centre the rails in the bed of the truck box with the measurements listed on the information chart above for long, short or compact boxes. From side to side using the rails as a template, *drill holes 1, 3, 4, through the floor of the truck bed then drop the 1/2" x 3" carriage bolts into the holes.

Frame Bracket Placement and Mounting: Place the supplied brackets upon the bolts that were installed in the box in step 2. Note some brackets may be easier to place than others depending on their locations.

Once brackets are installed in the order they fit best, tighten all brackets to the box using the supplied fasteners. Once they are tightened, *drill holes using the bracket as a template. Make sure there are no lines or wires interfering during *drilling. After *drilling is complete install the 1/2"x1-1/2" Hex Bolts to secure the brackets to the frame rails.

Tighten all mounting fasteners to the correct torque specifications listed below.

Bolt Size	Grade 5 Torque	Metric	Grade 8.8 Torque
9/16	110 Ft. Lb	8 mm	18 Ft. Lb.
7/16	54 Ft. Lb	10 mm	36 Ft. Lb.
1/2	72 Ft. Lb.	12 mm	75 Ft. Lb.
5/8	150 Ft. Lb	14 mm	103 Ft. Lb.
3/4	245 Ft. Lb		Maximum torque for weld or weld nuts is 38 FT/Lb

Warning: Check Fasteners annually or before usage, if the hitch is damaged replacement may be necessary

Do Not exceed hitch manufacturers hitch ratings listed above, DO NOT drill or alter this product. This product is only intended for the application listed above, see vehicle owner's manual for maximum towing capacity (GVWR). This product is intended for usage with the correct towing accessories and not to be used with tow ropes, cables, chains or any type of stretch or elastic rope.

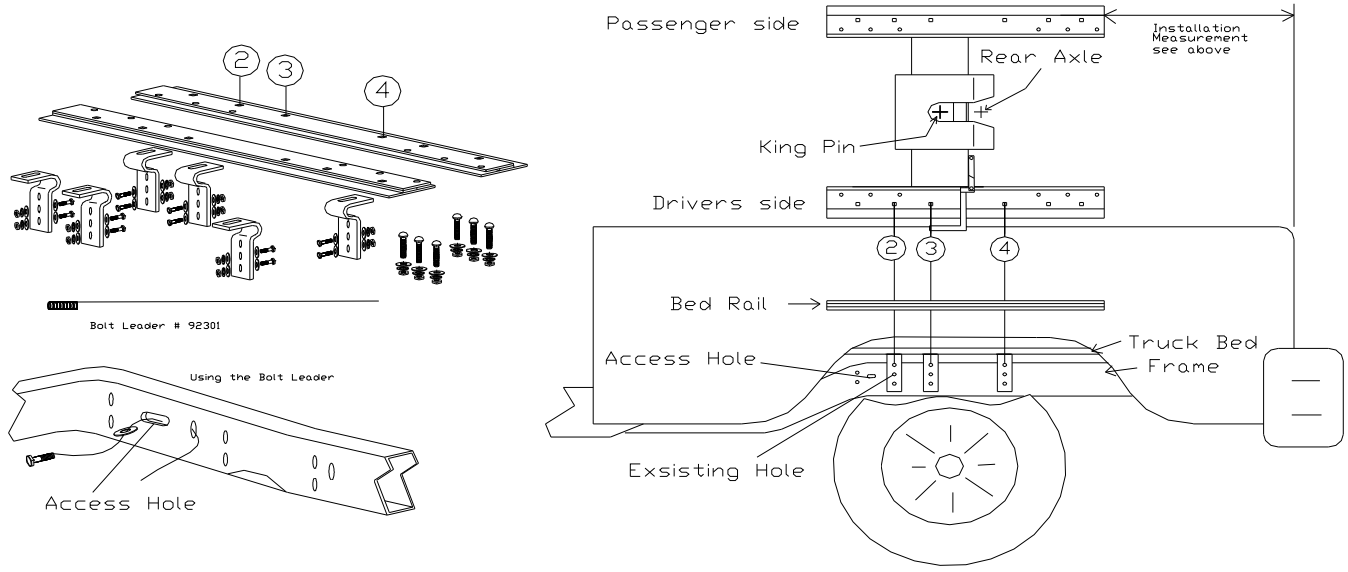
DSP Hitches are manufactured by Diversified Steel Products MFG. LTD Edmonton Alberta, Canada
 For more information on DSP and DSP products call 1-800-265-3377 or visit us at www.dsphitches.com

73745
Frame Bracket Kit for DSP
35" DP FW & GN Hitches

IMPORTANT: The bracket/hole placement is a suggestion. Frames vary! Always check the frame prior to drilling if this is the best location for the brackets. If the suggested holes are not ideal, move to the next closest hole.			Measurement end of rail to end of box			Frame Bracket placement by hole number (see drawing below)
			Comp. box 6.2'	Short box 6.5' 18"²	Long box 8' 23"²	
Hitch application	Notes	Years	see notes	see notes	see notes	FL630/FR630 - 2, 3 & 4
Chev/GMC 2500/3500	Ext, Reg, Quad Cabs	2011 - cur				
Chev/GMC 1500	Ext, Reg, Quad Cabs	2011 - 2013				

NOTE #1: Can be installed on compact box. Must be used with 10" King Pin extension or with the Reese Sidewinder use the RBW Wedge.

NOTE #2: Place center of king pin 1"-2" ahead of the axle when in travel position (closest to cab).



*** At any point during installation, ensure that once placement is made, there are NO lines or wires interfering prior to drilling.**

Parts List	Contents of Bolt Pack # 73745/B	Tools Required
3 FL630 Frame Bracket	6 Carriage Bolt 1/2 x 3, Grade 5, UNC, Plated	3/4" Wrench and Socket
3 FR630 Frame Bracket	30 Flat Washer 1/2, Plated	100 FT Torque Wrench
1 Bolt Pack # 73808D	12 Hex Bolt 1/2 x 1-1/2, Grade 5, UNC, Plated	Drill and 1/2" Drill Bit
1 DSP Warranty Card	18 Hex Nut 1/2, Grade 5, UNC, Plated	
1 Instructions F70000 Series	18 Lock Washer 1/2, Grade 5, Plated	
Ship. Weight:	2 Bolt Leaders 24"	
	14.6 lbs.	
	6.64 kg.	

Bed Rail Placement: 1) Follow the general installation guidelines for the assembly of the upper half of hitch system of your choice that is included with the system. The rails have a closed end and an open end (to slide the hitch in and out). Place closed end near cab. Slide the hitch into rails and lock in travel position (closest to end of the rail near cab). Place system with rails in the truck box and use measurements above as a guideline. Center hitch in between wheel wells. This installation recommends the use of a set of two (2) bed rail rib spacers #73851P. Rib spacers keep the rail level during installation and usage of the hitch. Place rib spacers between box and rails. **Note:** For best results for the installation of gooseneck hitches, install or use a fifth wheel hitch as a template or refer to the measurements under general "Gooseneck Hitch" installation guidelines.

Bed Rail Mounting: 2) Centre the rails in the bed of the truck box with the measurements listed on the information chart above for long, short or compact boxes. From side to side using the rails as a template, *drill holes #2, 3 & 4 through the floor of the truck bed then drop the 1/2" x 3" Carriage Bolts into the holes.

Frame Bracket Placement and Mounting 3) Place the supplied brackets upon the bolts that were installed in the box in step 2. Note some brackets may be easier to place than others depending on their locations.

4) Once brackets are installed in the order they fit best, tighten all brackets to the box using the supplied fasteners. Once they are tightened, *drill holes using the bracket as a template. Make sure there are no lines or wires interfering during *drilling. After *drilling is complete install the 1/2" x 1 1/2" Hex Bolts to secure the brackets to the frame rails. Use supplied Bolt Leader to fish bolts and washers into place.

5) Tighten all mounting fasteners to the correct torque specifications listed below.

Bolt Size	Grade 5 Torque	Metric	Grade 8.8 Torque
9/16	110 Ft. Lb	8 mm	18 Ft. Lb.
7/16	54 Ft. Lb	10 mm	36 Ft. Lb.
1/2	72 Ft. Lb.	12 mm	75 Ft. Lb.
5/8	150 Ft. Lb	14 mm	103 Ft. Lb.
3/4	245 Ft. Lb		

Maximum torque for weld or weld nuts is 38 FT/Lb

Warning: Check Fasteners annually or before usage, if the hitch is damaged replacement may be necessary

Do Not exceed hitch manufactures hitch ratings listed above, DO NOT drill or alter this product. This product is only intended for the application listed above, see vehicle owner's manual for maximum towing capacity (GVWR). This product is intended for usage with the correct towing accessories and not to be used with tow ropes, cables, chains or any type of stretch or elastic rope.

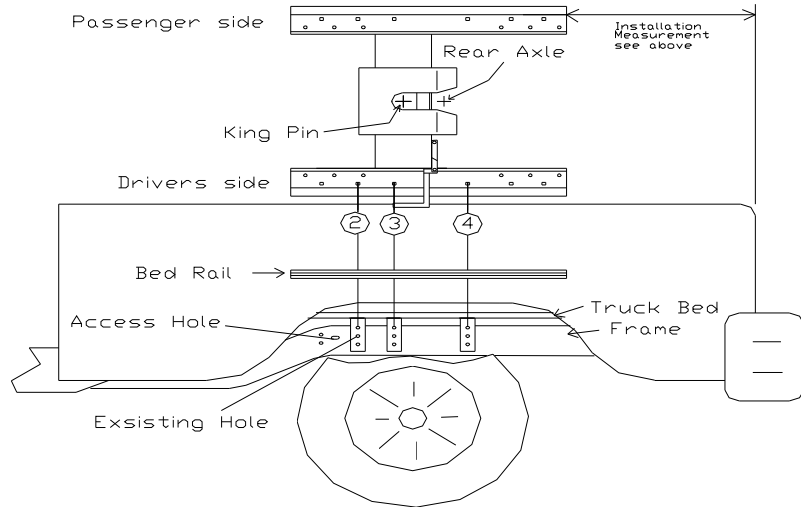
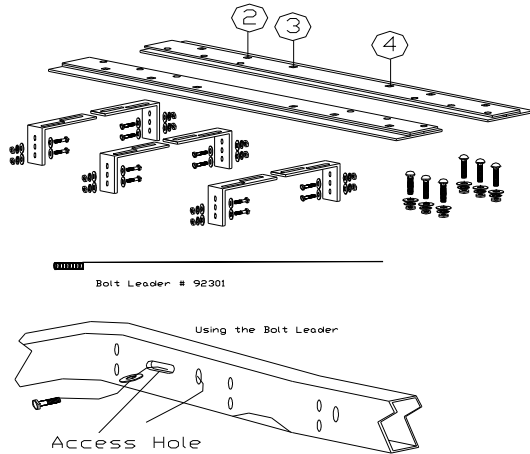
DSP Hitches are manufactured by Diversified Steel Products MFG. LTD Edmonton Alberta, Canada
For more information on DSP and DSP products call 1-800-265-3377 or visit us at www.dsphitches.com

IMPORTANT: The bracket/hole placement is a suggestion. Frames vary! Always check the frame prior to drilling if this is the best location for the brackets. If the suggested holes are not ideal, move to the next closest hole.

Hitch application	Notes	Years	Measurement end of rail to end of box			Frame Bracket placement by hole number (see drawing below)
			Comp. box 6.2'	Short box 6.5'	Long box 8'	
Chev/GMC 2500/3500	24" Install	2011 - cur	see notes	18" ²	23" ²	FL601/FR601 - 2, 3 & 4
Chev/GMC 1500	24" Install	2011 - 2013	see notes	18" ²	23" ²	FL601/FR601 - 2, 3 & 4
Chev/GMC 1500	35" Install	2014-cur	see notes	18" ²	23" ²	FL601/FR601 - 2, 3 & 4

NOTE #1: Can be installed on compact box. Must be used with 10" King Pin extension or with the Reese Sidewinder use the RBW Wedge.

NOTE #2: Place center of king pin 1"-2" ahead of the axle when in travel position (closest to cab).



*** At any point during installation, ensure that once placement is made, there are NO lines or wires interfering prior to drilling.**

Parts List	Contents of Bolt Pack # 73749/B	Tools Required
3 FL601 Frame Bracket 3 FR601 Frame Bracket 1 Bolt Pack # 73808D 1 DSP Warranty Card 1 Instructions F70000 Series	6 Carriage Bolt 1/2 x 3, Grade 5, UNC, Plated 30 Flat Washer 1/2, Plated 12 Hex Bolt 1/2 x 1-1/2, Grade 5, UNC, Plated 18 Hex Nut 1/2, Grade 5, UNC, Plated 18 Lock Washer 1/2, Grade 5, Plated 2 Bolt Leaders 24"	3/4" Wrench and Socket 100 FT Torque Wrench Drill and 1/2" Drill Bit
Ship. Weight: 18.6 lbs. / 8.5 kg.		

Bed Rail Placement: 1) Follow the general installation guidelines for the assembly of the upper half of hitch system of your choice that is included with the system. The rails have a closed end and an open end (to slide the hitch in and out). Place closed end near cab. Slide the hitch into rails and lock in travel position (closest to end of the rail near cab). Place system with rails in the truck box and use measurements above as a guideline. Center hitch in between wheel wells. This installation is recommended with the use of a set of two (2) bed rail rib spacers #73551P. Rib spacers keep the rail level during installation and usage of the hitch. Place rib spacers between box and rails. **Note:** For best results for the installation of gooseneck hitches, install or use a fifth wheel hitch as a template or refer to the measurements under general "Gooseneck Hitch" installation guidelines.

Bed Rail Mounting: 2) Centre the rails in the bed of the truck box with the measurements listed on the information chart above for long, short or compact boxes. From side to side using the rails as a template, *drill holes #2, 3 & 4 through the floor of the truck bed then drop the 1/2" x 3" Carriage Bolts into the holes.

Frame Bracket Placement and Mounting 3) Place the supplied brackets upon the bolts that were installed in the box in step 2. Note some brackets may be easier to place than others depending on their locations.

4) Once brackets are installed in the order they fit best, tighten all brackets to the box using the supplied fasteners. Once they are tightened, *drill holes using the bracket as a template. Make sure there are no lines or wires interfering during *drilling. After *drilling is complete install the 1/2" x 1 1/2" Hex Bolts to secure the brackets to the frame rails. Use supplied Bolt Leader to fish bolts and washers into place.

5) Tighten all mounting fasteners to the correct torque specifications listed below.

Bolt Size	Grade 5 Torque	Metric	Grade 8.8 Torque
9/16	110 Ft. Lb	8 mm	18 Ft. Lb.
7/16	54 Ft. Lb	10 mm	36 Ft. Lb.
1/2	72 Ft. Lb.	12 mm	75 Ft. Lb.
5/8	150 Ft. Lb	14 mm	103 Ft. Lb.
3/4	245 Ft. Lb		

Maximum torque for weld or weld nuts is 38 FT/Lb

Warning: Check Fasteners annually or before usage, if the hitch is damaged replacement may be necessary

Do Not exceed hitch manufactures hitch ratings listed above, DO NOT drill or alter this product. This product is only intended for the application listed above, see vehicle owner's manual for maximum towing capacity (GVWR). This product is intended for usage with the correct towing accessories and not to be used with tow ropes, cables, chains or any type of stretch or elastic rope.

DSP Hitches are manufactured by Diversified Steel Products MFG. LTD Edmonton Alberta, Canada
 For more information on DSP and DSP products call 1-800-265-3377 or visit us at www.dsphitches.com



Diversified Steel Products Mfg. Ltd.
5645 - 92 Street
Edmonton, AB T6E 3A4 Canada
1 (800) 265-3377

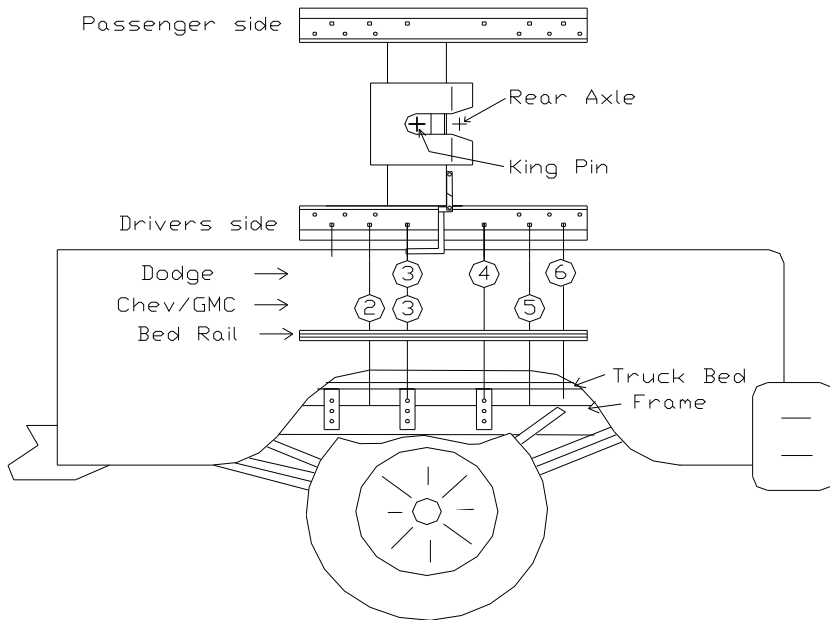
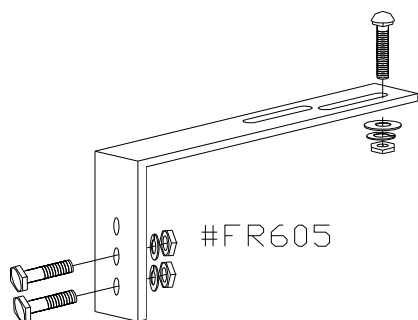
73752

Frame Bracket Kit for DSP 24" DP FW & GN Hitches

IMPORTANT: The bracket/hole placement is a suggestion. Frames vary! Always check the frame prior to drilling if this is the best location for the brackets. If the suggested holes are not ideal, move to the next closest hole.			Measurement end of rail to end of box			Frame Bracket placement by hole number (see drawing below)
Hitch application	Notes	Years	Comp. box 6.2'	Short box 6.5'	Long box 8'	
Dodge	ALL	11-CUR	see notes	18.75" ^z	21.5" ^z	FL605/FR605 - 3, 5 & 6
Chev/GMC 1500	Ext, Reg, Quad Cabs	2014-cur	see notes	18" ^z	23" ^z	FL605/FR605 - 2, 3 & 5

NOTE #1: Can be installed on compact box. Must be used with 10" King Pin extension or with the Reese Sidewinder use the RBW Wedge.
NOTE #2: Place center of king pin 1"-2" ahead of the axle when in travel position (closest to cab).

73752



*** At any point during installation, ensure that once placement is made, there are NO lines or wires interfering prior to drilling.**

Parts List		Contents of Bolt Pack # 73809	Tools Required
3	FL605 Frame Bracket	1 Bolt Leader 48"	3/4" Wrench and Socket 100 FT Torque Wrench Drill and 1/2" Drill Bit
3	FR605 Frame Bracket	6 Carriage Bolt 1/2 x 3, Grade 5, UNC, Plated	
1	Bolt Pack # 73809	12 Flat Washer 1/2, Plated	
1	DSP Warranty Card	12 Hex Bolt 1/2 x 1-1/2, Grade 5, UNC, Plated	
1	Instructions F70000 Series	18 Hex Nut 1/2, Grade 5, UNC, Plated	
Shipping weight:	26 lbs. 11.8 kg.	18 Lock Washer 1/2, Grade 5, Plated 2 # 91120 Reinforcement Spacer	

Bed Rail Placement: 1) Follow the general installation guidelines for the assembly of the upper half of hitch system of your choice that is included with the system. The rails have a closed end and an open end (to slide the hitch in and out). Place closed end near cab. Slide the hitch into rails and lock in travel position (closest to end of the rail near cab). Place system with rails in the truck box and use measurements above as a guideline. Center hitch in between wheel wells. This installation recommends the use of a set of two (2) bed rail rib spacers #73551P. Rib spacers keep the rail level during installation and usage of the hitch. Place rib spacers between box and rails. **Note:** For best results for the installation of gooseneck hitches, install or use a fifth wheel hitch as a template or refer to the measurements under general "Gooseneck Hitch" installation guidelines.

Bed Rail Mounting: Centre the rails in the bed of the truck box with the measurements listed on the information chart above for long, short or compact boxes. From side to side using the rails as a template, *drill holes as indicated above through the floor of the truck bed then drop the 1/2" x 3" carriage bolts into the holes.

Frame Bracket Placement and Mounting: Place the supplied brackets upon the bolts that were installed in the box in step 2. Note some brackets may be easier to place than others depending on their locations.

Once brackets are installed in the order they fit best, tighten all brackets to the box using the supplied fasteners. Once they are tightened, *drill holes using the bracket as a template. Make sure there are no lines or wires interfering during *drilling. After *drilling is complete install the 1/2"x1-1/2" Hex Bolts to secure the brackets to the frame rails.

Tighten all mounting fasteners to the correct torque specifications listed below.

Bolt Size	Grade 5 Torque	Metric	Grade 8.8 Torque
9/16	110 Ft. Lb	8 mm	18 Ft. Lb.
7/16	54 Ft. Lb	10 mm	36 Ft. Lb.
1/2	72 Ft. Lb.	12 mm	75 Ft. Lb.
5/8	150 Ft. Lb	14 mm	103 Ft. Lb.
3/4	245 Ft. Lb		

Maximum torque for weld or weld nuts is 38 FT/Lb

Warning: Check Fasteners annually or before usage, if the hitch is damaged replacement may be necessary

Do Not exceed hitch manufactures hitch ratings listed above, DO NOT drill or alter this product. This product is only intended for the application listed above, see vehicle owner's manual for maximum towing capacity (GVWR). This product is intended for usage with the correct towing accessories and not to be used with tow ropes, cables, chains or any type of stretch or elastic rope.

DSP Hitches are manufactured by Diversified Steel Products MFG. LTD Edmonton Alberta, Canada
For more information on DSP and DSP products call 1-800-265-3377 or visit us at www.dsphitches.com



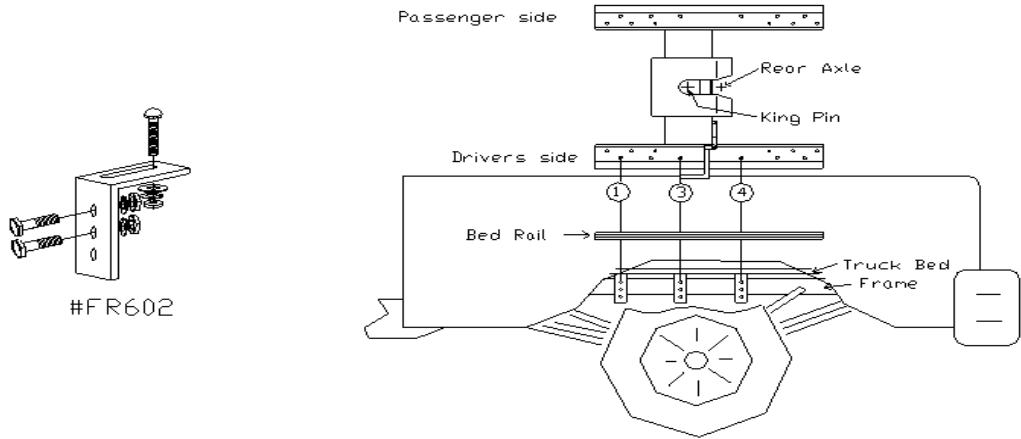
Diversified Steel Products Mfg. Ltd.
5645 - 92 Street
Edmonton, AB T6E 3A4 Canada
1 (800) 265-3377

www.dsphitches.com
EST. 1981

73764
Frame Bracket Kit for DSP
35" DP FW & GN Hitches

IMPORTANT: The bracket/hole placement is a suggestion. Frames vary! Always check the frame prior to drilling if this is the best location for the brackets. If the suggested holes are not ideal, move to the next closest hole.			Measurement end of rail to end of box			Frame Bracket placement by hole number (see drawing below)
Hitch application	Notes	Years	Comp. box 6.2'	Short box 6.5'	Long box 8'	
Chev/GMC	Ext, Reg, Quad Cab	67 - 87	see notes	18" ²	23" ²	FL602/FR602 - 1, 3 & 6
Dodge RAM All	Ext, Reg, Quad Cab	73 - 01	see notes	18 1/4" ²	21 3/4" ²	FL602/FR602 - 1, 4 & 5
Dodge RAM 2500 & up (channel)	Ext, Reg, Quad Cab	01 - 02	see notes	19" ²	21 1/2" ²	FL602/FR602 - 2, 3 & 5

NOTE #1: Can be installed on compact box. Must be used with 10" King Pin extension or with the Reese Sidewinder use the RBW Wedge.
NOTE #2: Place center of king pin 1"-2" ahead of the axle when in travel position (closest to cab).



*** At any point during installation, ensure that once placement is made, there are NO lines or wires interfering prior to drilling.**

Parts List	Contents of Bolt Pack # 73808	Tools Required
3 FL602 Frame Bracket	6 Carriage Bolt 1/2 x 3, Grade 5, UNC, Plated	3/4" Wrench and Socket
3 FR602 Frame Bracket	12 Flat Washer 1/2, Plated	100 FT Torque Wrench
1 Bolt Pack # 73808	12 Hex Bolt 1/2 x 1 1/2, Grade 5, UNC, Plated	Drill and 1/2" Drill Bit
1 DSP Warranty Card	18 Lock Washer 1/2", Grade 5, Plated	
1 Instructions F70000 Series	18 Hex Nut 1/2, Grade 5, UNC, Plated	
Shipping weight:	lbs. 21.8 lbs. kg. 9.9 kg.	

Bed Rail Placement: 1) Follow the general installation guidelines for the assembly of the upper half of hitch system of your choice that is included with the system. The rails have a closed end and an open end (to slide the hitch in and out). Place closed end near cab. Slide the hitch into rails and lock in travel position (closest to end of the rail near cab). Place system with rails in the truck box and use measurements above as a guideline. Center hitch in between wheel wells. This installation recommends the use of a set of two (2) bed rail rib spacers #73551P. Rib spacers keep the rail level during installation and usage of the hitch. Place rib spacers between box and rails. **Note:** For best results for the installation of gooseneck hitches, install or use a fifth wheel hitch as a template or refer to the measurements under general "Gooseneck Hitch" installation guidelines.

Bed Rail Mounting: 2) Centre the rails in the bed of the truck box with the measurements listed on the information chart above for long, short or compact boxes from side to side using the rails as a template, *drill holes through the floor of the truck bed. Then drop the 1/2" x 3" Carriage Bolts into the holes. See above for holes to drill.

Frame Bracket Placement and Mounting 3) Place the supplied brackets upon the bolts that were installed in the box in step 2. Note: some brackets may be easier to place than others depending on their locations.

4) Once brackets are installed in the order they fit best, tighten all brackets to the box using the supplied fasteners. Once they are tightened, *drill holes through using the bracket as a template. Make sure there are no lines or wires interfering during *drilling. After *drilling is complete install the 1/2" x 1-1/2" Hex Bolts to secure the brackets to the frame rails.

5) Tighten all mounting fasteners to the correct torque specifications listed below.

Bolt Size	Grade 5 Torque	Metric	Grade 8.8 Torque
9/16	110 Ft. Lb	8 mm	18 Ft. Lb.
7/16	54 Ft. Lb	10 mm	36 Ft. Lb.
1/2	72 Ft. Lb.	12 mm	75 Ft. Lb.
5/8	150 Ft. Lb	14 mm	103 Ft. Lb.
3/4	245 Ft. Lb	Maximum torque for weld or weld nuts is 38 FT/Lb	

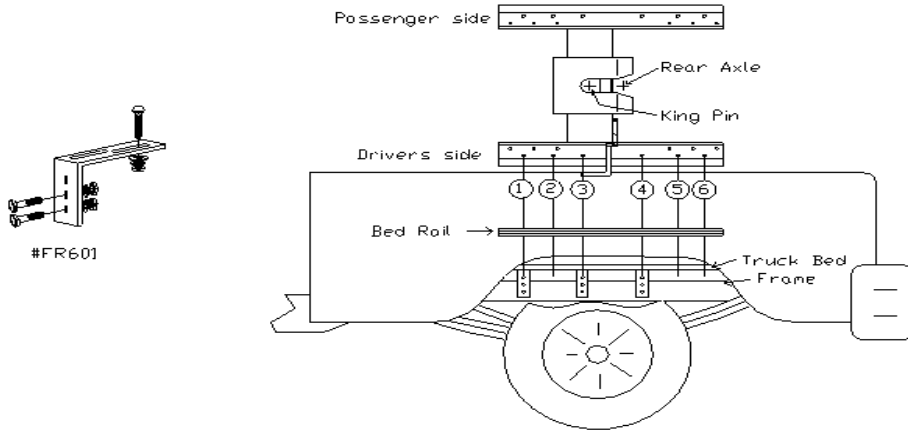
Warning: Check Fasteners annually or before usage, if the hitch is damaged replacement may be necessary!

DO NOT exceed hitch manufactures hitch ratings listed above, DO NOT drill or alter this product. This product is only intended for the application listed above, see vehicle owner's manual for maximum towing capacity (GVWR). This product is intended for usage with the correct towing accessories and not to be used with tow ropes, cables, chains or any type of stretch or elastic rope.

DSP Hitches are manufactured by Diversified Steel Products MFG. LTD Edmonton, Alberta, Canada
For more information on DSP and DSP products call 1-800-265-3377 or visit us at www.dsphitches.com

Hitch application			Measurement end of rail to end of box			Frame Bracket placement by hole number (see drawing below)
			Comp. box 6.2'	Short box 6.5'	Long box 8'	
Ford F-Series	Light Duty (channel)	2004-2007	see notes	20.5" ²	20.5" ²	FL601/FR601 - 2, 3 & 6
	Super Duty (channel)	2004-cur ³	see notes	21.25" ²	21.25" ²	FL601/FR601 - 2, 3 & 6
	All (channel)	1997-2003	see notes	20.5" ²	21.25" ²	FL601/FR601 - 2, 3 & 6
	All (channel)	1973-1996	see notes	19" ²	23.25" ²	FL601/FR601 - 2, 3 & 6
Chev/Gmc	New Generation	2009-2010	see notes	18" ²	23" ²	FL601/FR601 - 1, 3 & 4
	Light Duty (classic)	1999-2009	see notes	18" ²	23" ²	FL601/FR601 - 1, 3 & 4
	All (classic)	1967-1998	see notes	18" ²	23" ²	FL601/FR601 - 1, 3 & 5
Dodge	2500 & up (channel)	2001-2002	see notes	19" ²	21.5" ²	FL601/FR601 - 2, 3 & 6
	all (channel)	1973-2001	see notes	18.25" ²	21.75" ²	FL601/FR601 - 2, 3 & 6

NOTE #1: Can be installed on compact box. Must be used with 10" King Pin extension or with the Reese Sidewinder use the RBW Wedge.
NOTE #2: Place center of king pin 1"-2" ahead of the axle when in travel position (closest to cab).
NOTE #3: Without Factory Prep Package ONLY



Note: Hole drilled through Bed rail will vary with truck application
See listings above for holes to truck application

*** At any point during installation, ensure that once placement is made, there are NO lines or wires interfering prior to drilling.**

Parts List	Contents of Bolt Pack # 73808	Tools Required
3 FL601 Frame Bracket	6 Carriage Bolt 1/2 x 3, Grade 5, UNC, Plated	3/4" Wrench and Socket 100 FT Torque Wrench Drill and 1/2" Drill Bit
3 FR601 Frame Bracket	6 Flat Washer 1/2, Plated	
1 Bolt Pack # 73808	12 Hex Bolt 1/2 x 1-1/2, Grade 5, UNC, Plated	
1 DSP Warranty Card	18 Hex Nut 1/2, Grade 5, UNC, Plated	
1 Instructions F70000 Series	18 Lock Washer 1/2, Grade 5, Plated	
Shipping weight:	17.4 lbs. 7.9 kg.	

Bed Rail Placement: 1) Follow the general installation guidelines for the assembly of the upper half of hitch system of your choice that is included with the system. The rails have a closed end and an open end (to slide the hitch in and out). Place closed end near cab. Slide the hitch into rails and lock in travel position (closest to end of the rail near cab). Place system with rails in the truck box and use measurements above as a guideline. Center hitch in between wheel wells. This installation recommends the use of a set of two (2) bed rail rib spacers #73551P. Rib spacers keep the rail level during installation and usage of the hitch. Place rib spacers between box and rails.

Note: For best results for the installation of gooseneck hitches, install or use a fifth wheel hitch as a template or refer to the measurements under general "Gooseneck

Bed Rail Mounting: 2) Centre the rails in the bed of the truck box with the measurements listed on the information chart above for long, short or compact boxes. From side to side using the rails as a template, *drill holes through the floor of the truck bed then drop the 1/2" x 3" Carriage Bolts into the holes. See above for holes to drill.

Frame Bracket Placement and Mounting 3) Place the supplied brackets upon the bolts that were installed in the box in step 2. Note some brackets may be easier to place than others depending on their locations.

4) Once brackets are installed in the order they fit best, tighten all brackets to the box using the supplied fasteners. Once they are tightened, *drill hole using the bracket as a template. Make sure there are no lines or wires interfering during *drilling. After *drilling is complete install the 1/2"x1-1/2" Hex Bolts to secure the brackets to the

5) Tighten all mounting fasteners to the correct torque specifications listed below.

Bolt Size	Grade 5 Torque	Metric	Grade 8.8 Torque
9/16	110 Ft. Lb	8 mm	18 Ft. Lb.
7/16	54 Ft. Lb	10 mm	36 Ft. Lb.
1/2	72 Ft. Lb.	12 mm	75 Ft. Lb.
5/8	150 Ft. Lb	14 mm	103 Ft. Lb.
3/4	245 Ft. Lb		Maximum torque for weld or weld nuts is 38 FT/Lb

Warning: Check Fasteners annually or before usage, if the hitch is damaged replacement may be necessary

Do Not exceed hitch manufactures hitch ratings listed above, DO NOT drill or alter this product. This product is only intended for the application listed above, see vehicle owner's manual for maximum towing capacity (GVWR). This product is intended for usage with the correct towing accessories and not to be used with tow ropes, cables, chains or any type of stretch or elastic rope.

DSP Hitches are manufactured by Diversified Steel Products MFG. LTD Edmonton Alberta, Canada
For more information on DSP and DSP products call 1-800-265-3377 or visit us at www.dsphitches.com