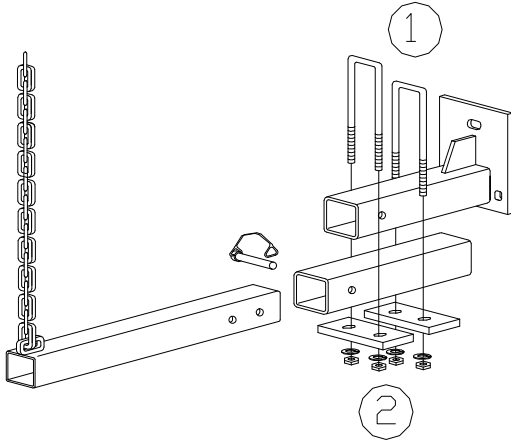


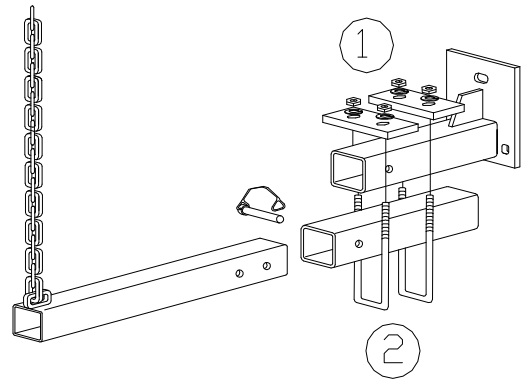
61101
 Hitch application
**Universal Camper Tiedown
 Running Board Adapter**

****NOTE: Camper Tiedown is not included**

Option 1



Option 2



Parts List		Contents of Bolt Pack # 61101B		Tools Required
2	Mainbody Part # 61101/MBU	4	U Bolt SQ 7/16 x 6-1/2 x 2" w. 1/2" thread	11/16" Socket or Wrench 100 FT/LB Torque Wrench
4	7/16" Sub Bracket # 61101/SBU	8	Lock Washer 7/16, Grade 5, Plated	
1	Bolt Pack	8	Hex Nut 7/16", Grade 5, UNC, Plated	
1	DSP Warranty Card			
1	Instructions T61000 Series			
Shipping Weight	37 lbs. 16.8 kg.			No Drill Application

- 1) Locate tiedown on existing truck and place U - Bolt over tiedown. Raise mainbody tube under the existing tiedown and install the 2 Holed Spacer beneath the mainbody and install the washers and nuts to hold in place. (Shown in diagram above).
(U - bolt can be install either up or down depending on the application and owner's preference)
- 2) Repeat step 1 for other 3 U - Bolts to be installed.
- 3) Tighten and torque all fasteners to the correct torque specifications listed below.

Bolt Size	Grade 5 Torque	Metric	Grade 8.8 Torque
3/8	30 Ft. Lb	8 mm	18 Ft. Lb.
7/16	54 Ft. Lb	10 mm	36 Ft. Lb.
1/2	72 Ft. Lb.	12 mm	75 Ft. Lb.
5/8	150 Ft. Lb	14 mm	103 Ft. Lb.
3/4	245 Ft. Lb	Maximum torque for weld or weld nuts is 38 FT/Lb	

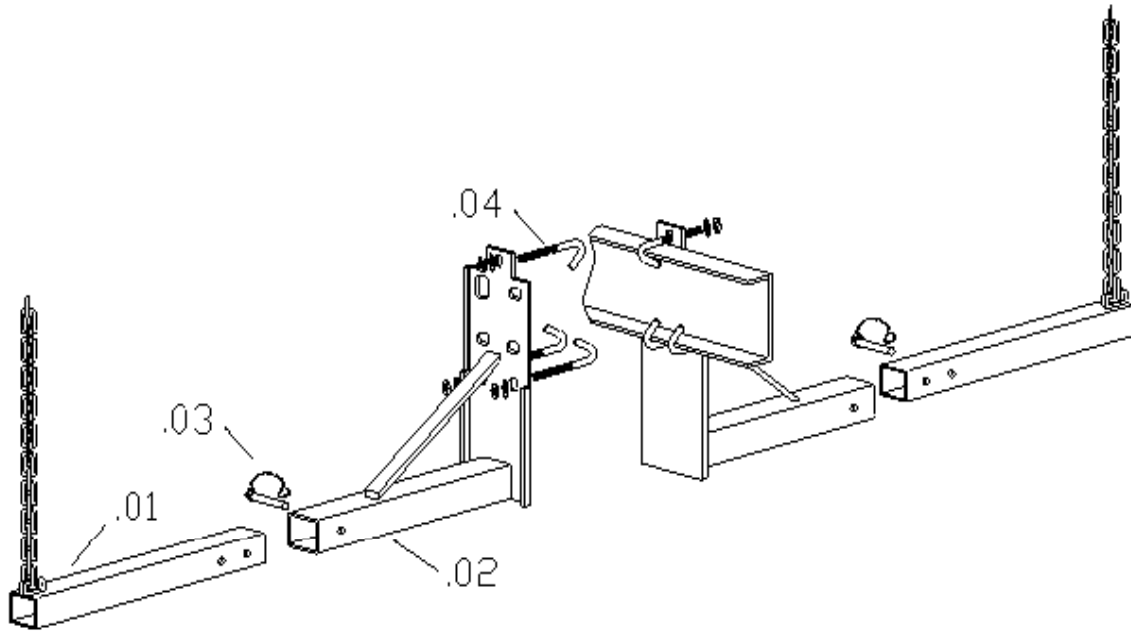
Warning: Check Fasteners annually or before usage, if the Tiedown is damaged replacement may be necessary.
 DO NOT drill or alter this product. This product is only intended for the application listed above, see vehicle owner's manual for maximum camper capacity (GVWR). This product is intended for usage with the correct towing accessories and not to be used with tow ropes, cables, chains or any type of stretch or elastic rope.

61152

Hitch application

Ford Super Duty Front Mount Camper Tiedown

For specific fit, see current fit list
 in our catalogue at www.dsphitches.com

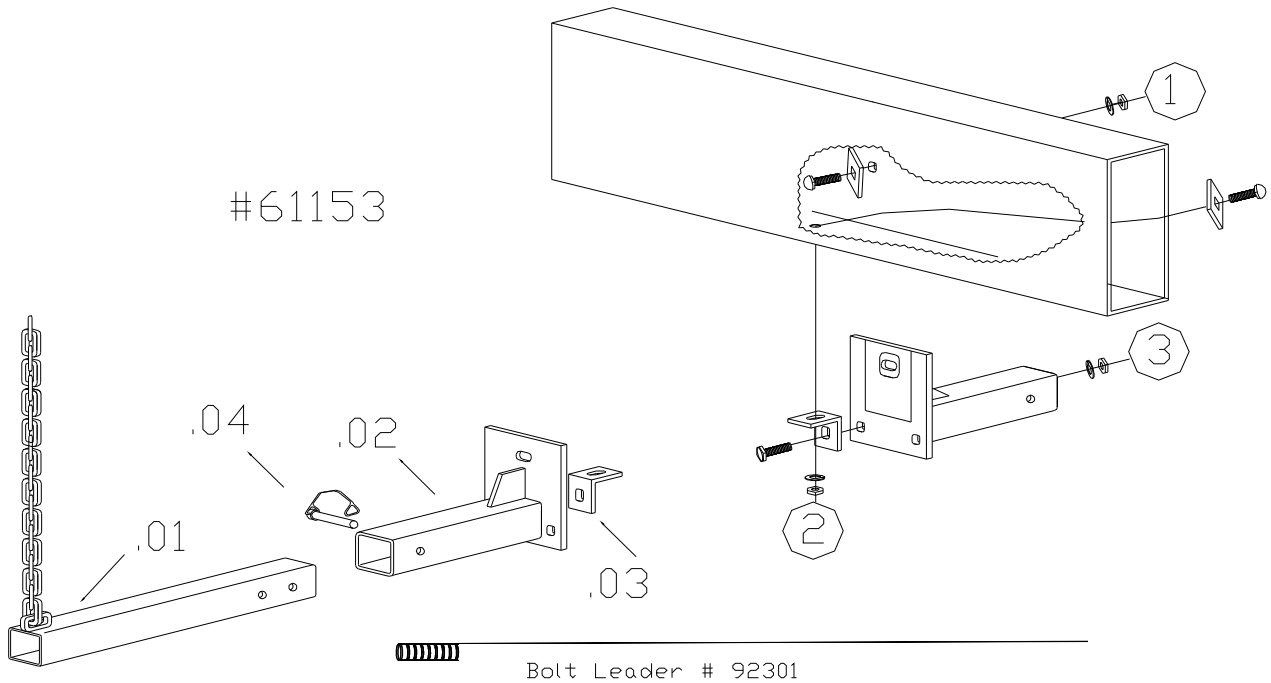


Parts List	Contents of Bolt Pack # 61152B	Tools Required
1 Main Body Part # 61152/MBD 1 Main Body Part # 61152/MBP 2 Tube Chains 12" # 63101 1 Bolt Pack #61152/B 1 DSP Warranty Card 1 Instructions T61000 Series	6 CT Specialty J Bolt # 63107 Black 6 Hex Nut 1/2, Grade 5, UNC, Plated 6 Flat Washer 1/2 Plated 6 Lock Washer 1/2, Grade 5, UNC, Plated 2 Quick Pin Round 3/8 x 2-1/4	3/4" Socket or Wrench 100 FT/LB Torque Wrench
Shipping 37 lbs. Weight 16.82 kg.		

- 1) Position camper tiedown between cab mount and box mount.
- 2) Fasten to the frame using the 1/2" J Bolts provided. (Refer to diagram above)
- 3) Tighten all mounting fasteners to the correct torque specification listed below.

Bolt Size	Grade 5 Torque	Metric	Grade 8.8 Torque
3/8	30 Ft. Lb	8 mm	18 Ft. Lb.
7/16	54 Ft. Lb	10 mm	36 Ft. Lb.
1/2	72 Ft. Lb.	12 mm	75 Ft. Lb.
5/8	150 Ft. Lb	14 mm	103 Ft. Lb.
3/4	245 Ft. Lb	Maximum torque for weld or weld nuts is 38 FT/Lb	

Warning: Check Fasteners annually or before usage, if the Tiedown is damaged replacement may be necessary.
 DO NOT drill or alter this product. This product is only intended for the application listed above, see vehicle owner's manual for maximum camper capacity (GVWR). This product is intended for usage with the correct towing accessories and not to be used with tow ropes, cables, chains or any type of stretch or elastic rope.



Parts List		Contents of Bolt Pack # 61153/B	Tools Required
2 Main Body Part # 61153/MBU		4 Carriage Bolt 1/2 x 1-1/2, Grade 5, UNC, Plated	3/4" Socket or Wrench
2 Tube Chains 17" # 63102		6 Conical Washer 1/2 Style 8 STL Zinc	100 FT/LB Torque Wrench
2 CT Sub Bracket # 61153/SBU		6 Hex Nut 1/2, Grade 5, UNC, Plated	
1 Bolt Pack 61153/B		2 Hex Bolt 1/2 x 1-1/2, Grade 5, UNC, Plated	
1 DSP Warranty Card		2 Quick Pin Round 3/8 x 2-1/4	
1 Instructions 61000 Series		4 # 91224 Reinforcement Spacers	
		1 Bolt Leader 24"	
Ship. Weight	36.2 lbs. 16.5 kg.		No Drill Application

- 1) Locate hole (1) in side of frame rail. Fish 1/2" x 1-1/2" carriage bolt and spacer # 91224 into this hole and loosely attach the camper tiedown. (As shown in diagram)
- 2) Locate hole (2) in the bottom of the frame rail and fish 1/2" x 1 1/2" carriage bolt and spacer # 91224 into this hole and attach sub bracket # 61153/SBU. Install the 1/2" x 1-1/2" hex bolt and washer and nut. (As shown in diagram)
- 3) Tighten all mounting fasteners to the correct torque specification listed below.
- 4) Repeat steps 1 and 2 for passenger side of vehicle.

Bolt Size	Grade 5 Torque	Metric	Grade 8.8 Torque
3/8	30 Ft. Lb	8 mm	18 Ft. Lb.
7/16	54 Ft. Lb	10 mm	36 Ft. Lb.
1/2	72 Ft. Lb.	12 mm	75 Ft. Lb.
5/8	150 Ft. Lb	14 mm	103 Ft. Lb.
3/4	245 Ft. Lb	Maximum torque for weld or weld nuts is 38 FT/Lb	

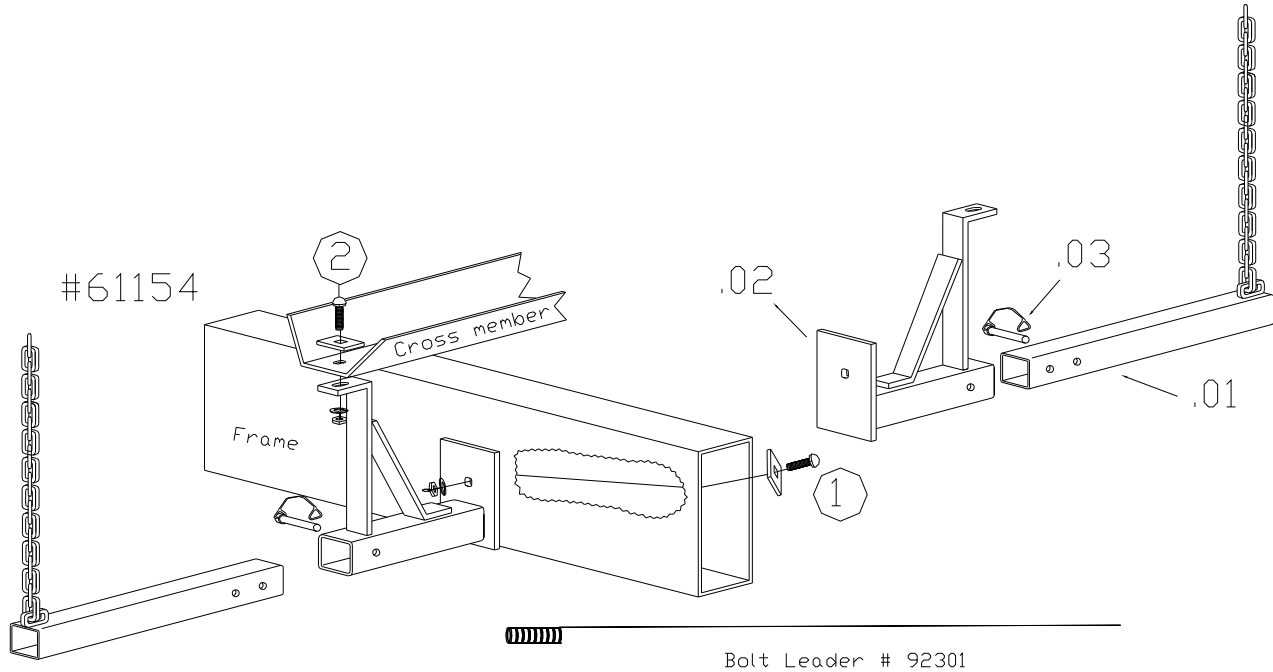
Warning: Check Fasteners annually or before usage, if the Tiedown is damaged replacement may be necessary.
DO NOT drill or alter this product. This product is only intended for the application listed above, see vehicle owner's manual for maximum camper capacity (GVWR). This product is intended for usage with the correct towing accessories and not to be used with tow ropes, cables, chains or any type of stretch or elastic rope.

61154

Hitch application

Ford F150 Long Box Only Front Mount Tiedown

For specific fit, see current fit list
in our catalogue at www.dsphitches.com



Parts List	Contents of Bolt Pack # 61154B	Tools Required
Main Body Part # 61154/MBU Tube Chains 17" Bolt Pack # 61154/B	4 Carriage Bolt 1/2 x 1 1/2, Grade 5, UNC, Plated 4 Conical Washer 1/2 Style 8 STL Zinc 4 Hex Nut 1/2, Grade 5, UNC, Plated 2 Quick Pin Round 3/8 x 2-1/4 1 Bolt Leader 24" 4 # 91224 Reinforcement Spacers	3/4" Socket or Wrench 100 FT/LB Torque Wrench
Shipping Weight 22.4 lbs. 10 kg.	1 DSP Warranty Card 1 Instructions T61000 Series	No Drill Application

- 1) Locate hole in frame (1) as shown in diagram above. Fish 1/2" x 1 1/2" Carriage Bolt and Spacer # 91224 into this hole. Raise tiedown upon this bolt and install the Conical Toothed Washer and Nut. (leave lose). (To be tightened in step # 3)
- 2) Locate hole (2) in the bottom of the box crossmember as shown in diagram. Install 1/2" x 1 1/2" Carriage Bolt and Spacer # 91224 into hole (2). Raise tiedown upon this bolt and install the Conical Toothed Washer and Nut supplied.
- 3) Tighten all mounting fasteners to the correct torque specifications listed below.
- 4) Repeat steps 1 and 2 for passenger side.

Bolt Size	Grade 5 Torque	Metric	Grade 8.8 Torque
3/8	30 Ft. Lb	8 mm	18 Ft. Lb.
7/16	54 Ft. Lb	10 mm	36 Ft. Lb.
1/2	72 Ft. Lb.	12 mm	75 Ft. Lb.
5/8	150 Ft. Lb	14 mm	103 Ft. Lb.
3/4	245 Ft. Lb	Maximum torque for weld or weld nuts is 38 FT/Lb	

Warning: Check Fasteners annually or before usage, if the Tiedown is damaged replacement may be necessary.
DO NOT drill or alter this product. This product is only intended for the application listed above, see vehicle owner's manual for maximum camper capacity (GVWR). This product is intended for usage with the correct towing accessories and not to be used with tow ropes, cables, chains or any type of stretch or elastic rope.

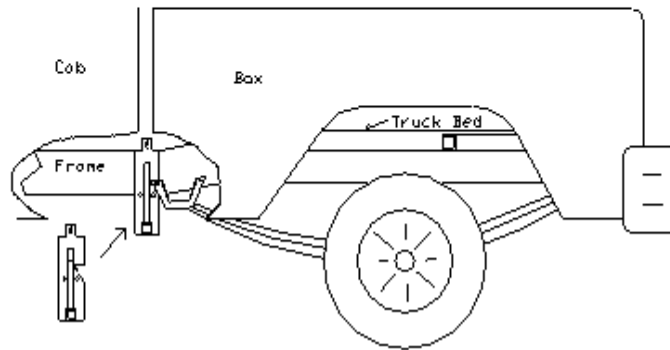
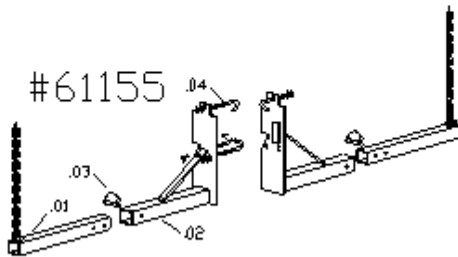
DSP Hitches are manufactured by Diversified Steel Products MFG. LTD Edmonton Alberta, Canada
For more information on DSP and DSP products call 1-800-265-3377 or visit us at www.dsphitches.com

61155

Hitch application

Ford Superduty Short Box Only Front Mount Camper Tiedown

For specific fit, see current fit list
in our catalogue at www.dsphitches.com

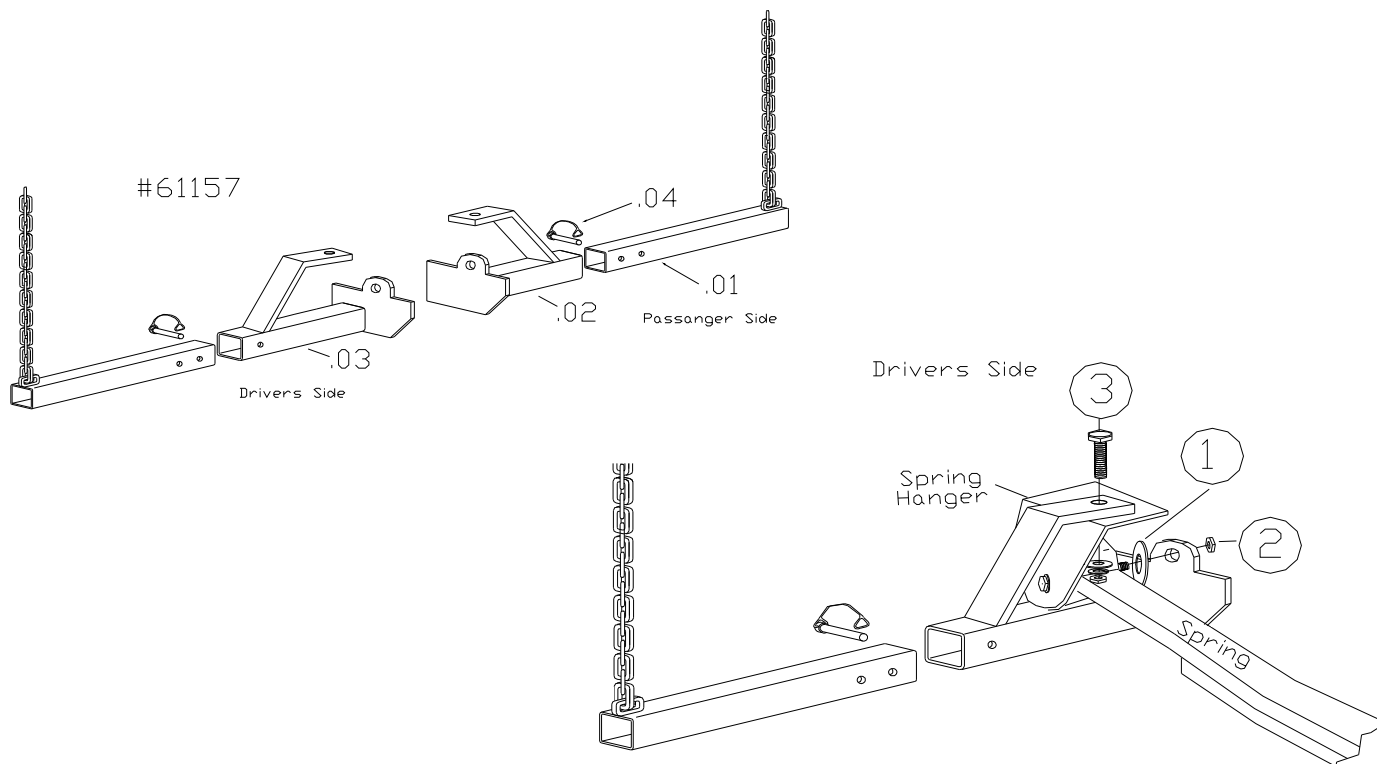


Parts List	Contents of Bolt Pack # 61155/B	Tools Required
Main Body Part # 61155/MBD	6 Hex Nut 1/2, Grade 5, UNC, Plated	3/4" Socket or Wrench 100 FT/LB Torque Wrench
Main Body Part # 61155/MBP	6 Flat Washer 1/2, Plated	
Tube Chains 17"	6 Lock Washer 1/2, Grade 5, UNC, Plated	
CT Specialty J Bolt (zinc)	2 Quick Pin Round 3/8 x 2-1/4	
Bolt Pack	1 DSP Warranty Card	
Shipping 40.2 lbs.	1 Instructions T61000 Series	
Weight 18 kg.		Drill Application

- 1) Position camper tiedown between cab mount and box mount with the cut out, fitting around the spring shank.
- 2) Fasten to the frame using the 1/2" J Bolts provided. (Refer to diagram above)
- 3) Tighten all mounting fasteners to the correct torque specification listed below.

Bolt Size	Grade 5 Torque	Metric	Grade 8.8 Torque
3/8	30 Ft. Lb	8 mm	18 Ft. Lb.
7/16	54 Ft. Lb	10 mm	36 Ft. Lb.
1/2	72 Ft. Lb.	12 mm	75 Ft. Lb.
5/8	150 Ft. Lb	14 mm	103 Ft. Lb.
3/4	245 Ft. Lb	Maximum torque for weld or weld nuts is 38 FT/Lb	

Warning: Check Fasteners annually or before usage, if the Tiedown is damaged replacement may be necessary.
DO NOT drill or alter this product. This product is only intended for the application listed above, see vehicle owner's manual for maximum camper capacity (GVWR). This product is intended for usage with the correct towing accessories and not to be used with tow ropes, cables, chains or any type of stretch or elastic rope.



Parts List		Contents of Bolt Pack # 61157/B	Tools Required
1	Mainbody Part# 61157/MBP	2 Flat Washer 3/4", Plated	11/16" Socket or Wrench 100 FT/LB Torque Wrench
1	Mainbody Part # 61157/MBD	2 Flat Washer 1/2", UNC, Grade 5, Plated	
2	Tube Chain 17" # 63102	2 Hex Bolts 1/2 X 1-1/2, UNC, Grade 5, Plated	
1	Bolt Pack 61157/B	2 Hex Nut 1/2", UNC, Grade 5, Plated	
1	DSP Warranty Card	2 Lock Washer 1/2", UNC, Grade 5, Plated	
1	Instructions T61000 Series	2 Locknut M20 x 2.5	
Shipping 32.98 lbs.		2 Quick Pins	No Drill Application
Weight 14.99 kg.			

- Place 3/4" flat washer to the inside of the front suspension hanger as a spacer. Lift and twist the mainbody tiedown into place so the "I" shaped support bracket rests on the spring hanger.
- Loosely place the supplied M20 x 2.5 (lock nut or nut and washer) on to the spring bolt.
- Bolt the support bracket in place onto the spring hanger with 1/2 x 1-1/2 hex bolt, attach the 1/2 flatwasher, lock washer and nut into place.
- Repeat on passanger side, tighten all fasteners:
1/2 bolt: 80 ft/lbs
M20 x 2.5 hex nut: 100-120 ft/lbs

Bolt Size	Grade 5 Torque	Metric	Grade 8.8 Torque
3/8	30 Ft. Lb	8 mm	18 Ft. Lb.
7/16	54 Ft. Lb	10 mm	36 Ft. Lb.
1/2	72 Ft. Lb.	12 mm	75 Ft. Lb.
5/8	150 Ft. Lb	14 mm	103 Ft. Lb.
3/4	245 Ft. Lb		Maximum torque for weld or weld nuts is 38 FT/Lb

Warning: Check Fasteners annually or before usage, if the Tiedown is damaged replacement may be necessary.
DO NOT drill or alter this product. This product is only intended for the application listed above, see vehicle owner's manual for maximum camper capacity (GVWR). This product is intended for usage with the correct towing accessories and not to be used with tow ropes, cables, chains or any type of stretch or elastic rope.

**Ford Super Duty Long Box
Front Mount Camper Tiedown**

For specific fit, see current fit list in our catalogue at www.dsphitches.com

Diagram 1

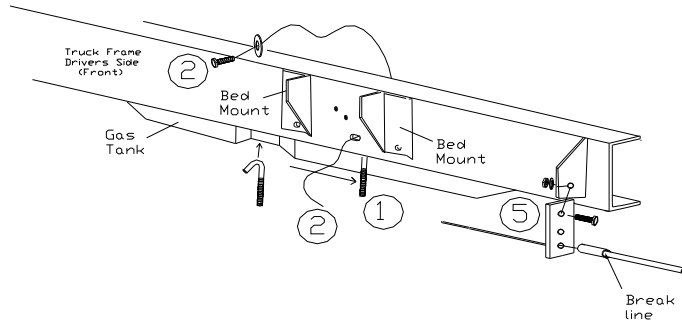
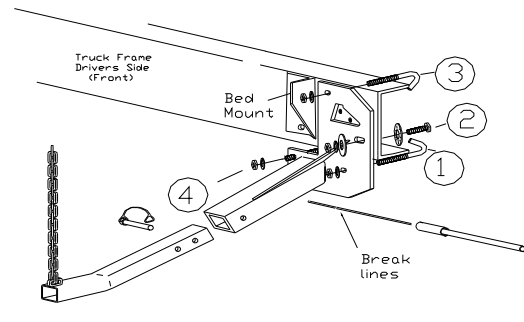


Diagram 2



Parts List		Contents of Bolt Pack # 61158/B		Tools Required
1	Mainbody Part# 61158/MBP	6	J BOLT Black	11/16" Socket or Wrench 100 FT/LB Torque Wrench
1	Mainbody Part # 61158/MBD	1	Bolt Leader 24"	
2	CT ANGLED TUBE CHAIN 17"	3	Hex Bolts 1/2 X 2, UNC, Grade 5, Plated	
1	Bolt Pack 61158/B	9	Hex Nut 1/2", UNC, Grade 5, Plated	
1	DSP Warranty Card	7	Lock Washer 1/2", UNC, Grade 5, Plated	
1	Instructions T61000 Series	4	Conical Washer 1/2 Style 8 STL Zinc	No Drill Application
Shipping	36.2 lbs.	2	Quick Pins	
Weight	16.45 kg.	1	61158 Support Bracket DS 3Hole (Holes:1/2")	

Drivers side: remove bolt that hold the gas tank cover to the frame. DO NOT remove cover, let hang!

Hole 1) Locate the gap in the in the frame, insert and slide J-Bolt below oval hole #2. Leave J-Bolt hanging for later use.

Hole 2) Using the bolt leader, fish wire conical washer and 1/2"x2" hex bolt through the top of the frame. Do not remove bolt leader from bolt. Lift the main body into place and line up with the bolt in hole 2. Carefully remove the bolt leader and place 1/2" conical washer and 1/2" nut onto bolt, loosely fasten.

Hole 1) Line up tiedown, insert J-Bolt into mainbody and loosely fasten with 1/2" lockwasher and 1/2" nut.

Holes 3 & 4) Line up the mainbody and insert the J-Bolts through holes and mainbody. Loosely fasten with 1/2" lockwasher and 1/2" nut. J-Bolt for Hole 4 is located in the gap of the gas tank. Tighten all fasteners according to chart below.

Hole 5) Disengage e-break during installation, disconnect break line, mount the supplied 3 hole support bracket to the original factory brake line bracket using 1/2"x2" hex bolt, 1/2" lockwasher and 1/2" nut. Reattach the break line through the low holes in the newly installed support bracket.

Passenger Side: This side does not have the gas tank and will be easier to install. There may be some electrical wires that may need to be moved for installation and resecured when done. **NOTE:** Start with hole 2 to hold the mainbody in place.

Hole 2) Locate the oval hole between the bed mount brackets, using bolt leader, fish wire 1/2" conical washer and 1/2"x2" hex bolt into hole 2. (Bolt leader may not be required on all models)

Holes 1, 3 & 4) Attach a J-Bolt onto the frame, fasten with 1/2" lockwasher and 1/2" nut.

Reinstall and relocate any electric wires if necessary. Fasten all fasteners on both sides to the torque specifications below.

WARNING: When tightening J-Bolt a torque wench must be use, damage to the J-Bolt due to over tightening with power tools will void the warranty of the J-Bolts!

Bolt Size	Grade 5 Torque	Metric	Grade 8.8 Torque
3/8	30 Ft. Lb	8 mm	18 Ft. Lb.
7/16	54 Ft. Lb	10 mm	36 Ft. Lb.
1/2	72 Ft. Lb.	12 mm	75 Ft. Lb.
5/8	150 Ft. Lb	14 mm	103 Ft. Lb.
3/4	245 Ft. Lb	Maximum torque for weld or weld nuts is 38 FT/LB	

Warning: Check Fasteners annually or before usage, if the Tiedown is damaged replacement may be necessary.

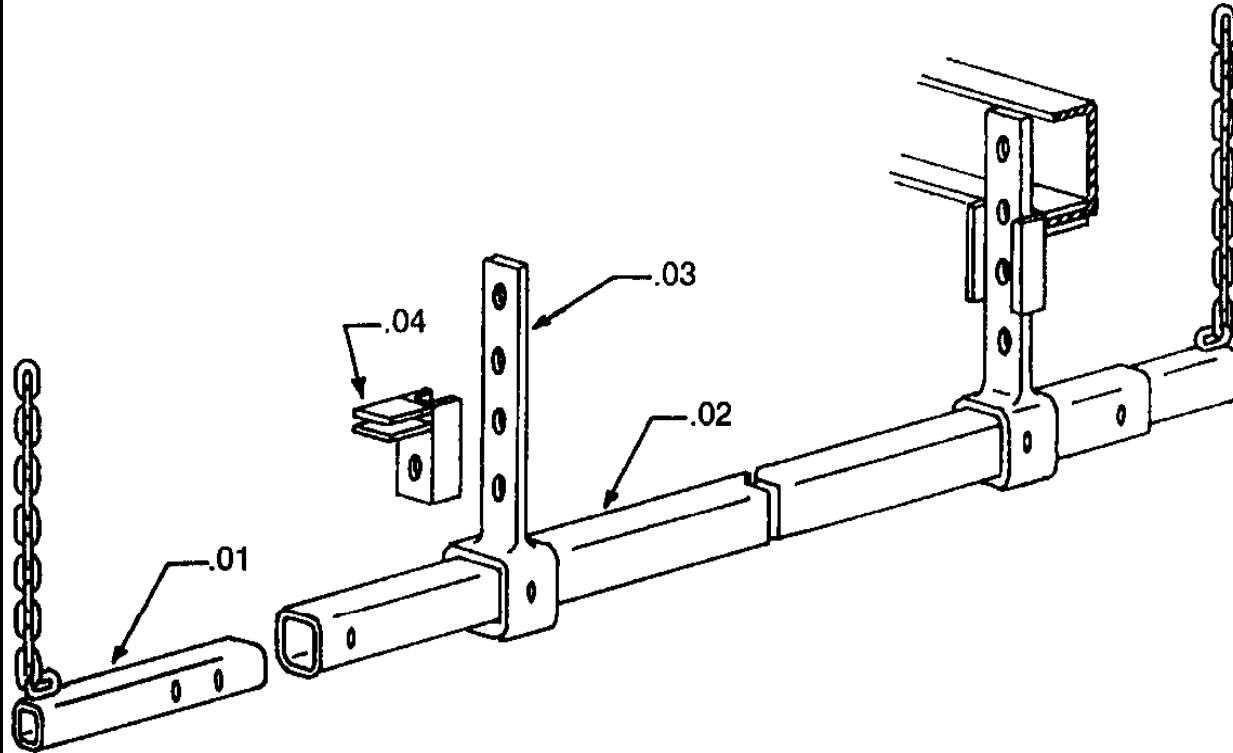
DO NOT drill or alter this product. This product is only intended for the application listed above, see vehicle owner's manual for maximum camper capacity (GVWR). This product is intended for usage with the correct towing accessories and not to be used with tow ropes, cables, chains or any type of stretch or elastic rope.

61309

Hitch application

Universal Front Mount Camper

For specific fit, see current fit list
in our catalogue at www.dsphitches.com



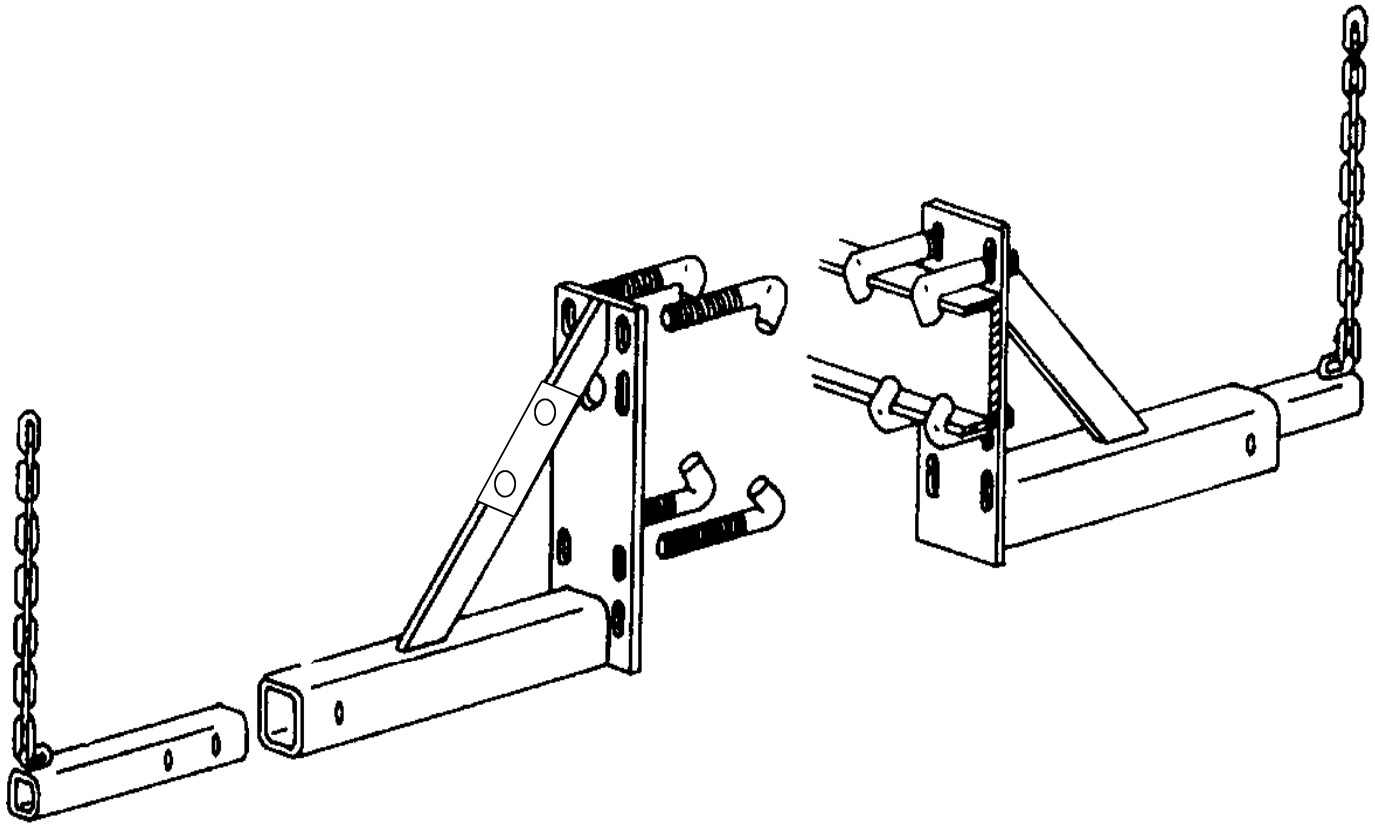
Parts List		Contents of Bolt Pack # 61309B	Tools Required
1	CT Belly Bar 68" # 63105	2	Hex Bolt 1/2 x 1 1/2, Grade 5, UNC, Plated
2	CT Height Adjuster # 61309/HA	4	Hex Bolt 1/2 x 1, Grade 5, UNC, Plated
2	CT Frame Clip # 61309/FC	2	Lock Washer 1/2, Grade 5, Plated
2	Tube Chains 12" # 63101	2	Hex Nut 1/2, Grade 5, UNC, Plated
1	Bolt Pack #61309/B	2	Quick Pin Round 3/8 x 2-1/4
1	DSP Warranty Card		
1	Instructions T61000 Series		
Shipping	42.8 lbs.		Drill Application
Weight	19.45 kg.		

- Assemble frame clip and height adjuster as shown in diagram. Place on frame in desired area of installation.
- Install the Belly Bar through the height adjuster and center on vehicle. Tighten the mounting fasteners to the correct torque specifications listed below. (Do not over tighten)

Bolt Size	Grade 5 Torque	Metric	Grade 8.8 Torque
3/8	30 Ft. Lb	8 mm	18 Ft. Lb.
7/16	54 Ft. Lb	10 mm	36 Ft. Lb.
1/2	72 Ft. Lb.	12 mm	75 Ft. Lb.
5/8	150 Ft. Lb	14 mm	103 Ft. Lb.
3/4	245 Ft. Lb	Maximum torque for weld or weld nuts is 38 FT/Lb	

Warning: Check Fasteners annually or before usage, if the Tiedown is damaged replacement may be necessary.
DO NOT drill or alter this product. This product is only intended for the application listed above, see vehicle owner's manual for maximum camper capacity (GVWR). This product is intended for usage with the correct towing accessories and not to be used with tow ropes, cables, chains or any type of stretch or elastic rope.

DSP Hitches are manufactured by Diversified Steel Products MFG. LTD Edmonton Alberta, Canada
For more information on DSP and DSP products call 1-800-265-3377 or visit us at www.dsphitches.com



Parts List		Contents of Bolt Pack # 61310/B		Tools Required
1	Main Body Driver Side	8	CT Specialty J Bolt - black	3/4" Socket or Wrench 100 FT/LB Torque Wrench
1	Main Body Passenger Side	2	Hex Bolt 1/2 x 1, Grade 5, UNC, Plated	
2	Tube Chains 12"	8	Flatwasher 1/2	
1	Bolt Pack	10	Lockwasher 1/2	
1	DSP Warranty Card	10	Hex Nut 1/2, Grade 5, UNC, Plated	
1	Instructions T61000 Series	1	# 91310 2-Holed Spacer for Driver Side MB	
Shipping Weight	33.4 lbs. 15.18 kg.	2	Quick Pin Round 3/8 x 2-1/4	

Drill Application

- 1) Find best location to place the passenger side mainbody where the J-Bolts are able to hook onto the frame and fasten loosely for time being.
- 2) On driver's side, slip Brake Line through opening in mainbody and place J-Bolts into place on truck frame, fasten loosely for time being. Close space on driver's side mainbody with 2-holed spacer (#91310) and use hex bolts, lockwashers and hex nuts to fasten.
- 3) Tighten all mounting fasteners to the correct torque specifications listed below.

Bolt Size	Grade 5 Torque	Metric	Grade 8.8 Torque
3/8	30 Ft. Lb	8 mm	18 Ft. Lb.
7/16	54 Ft. Lb	10 mm	36 Ft. Lb.
1/2	72 Ft. Lb.	12 mm	75 Ft. Lb.
5/8	150 Ft. Lb	14 mm	103 Ft. Lb.
3/4	245 Ft. Lb	Maximum torque for weld or weld nuts is 38 FT/Lb	

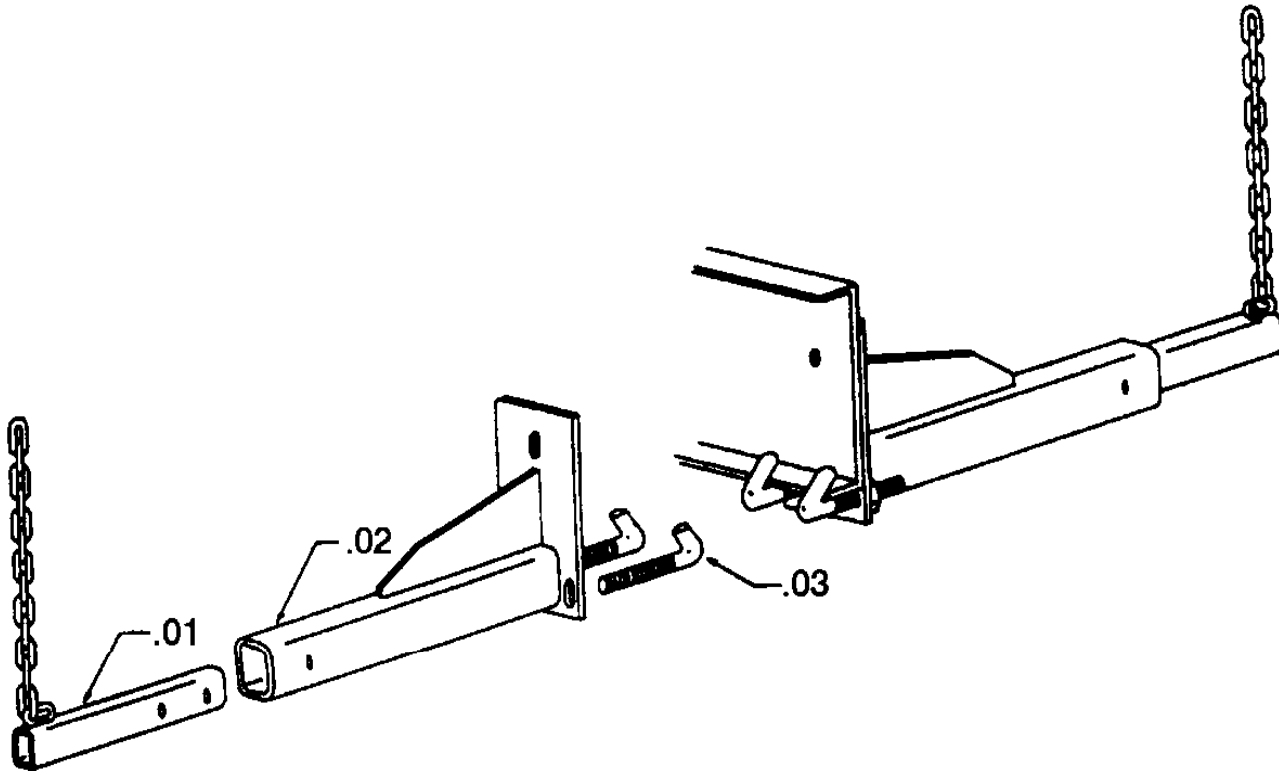
Warning: Check Fastens annually or before usage, if the Tiedown is damaged replacement may be necessary.
DO NOT drill or alter this product. This product is only intended for the application listed above.
See vehicle owner's manual for maximum Camper capacity (GVWR). This product is intended for usage with the correct towing accessories and not to be used with tow ropes, cables, chains or any type of stretch or elastic rope.

61311

Front Camper Tiedown Hitch Application

Chev/GMC Front Mount Camper Tiedown

For specific fit, see current fit list
in our catalogue at www.dsphitches.com



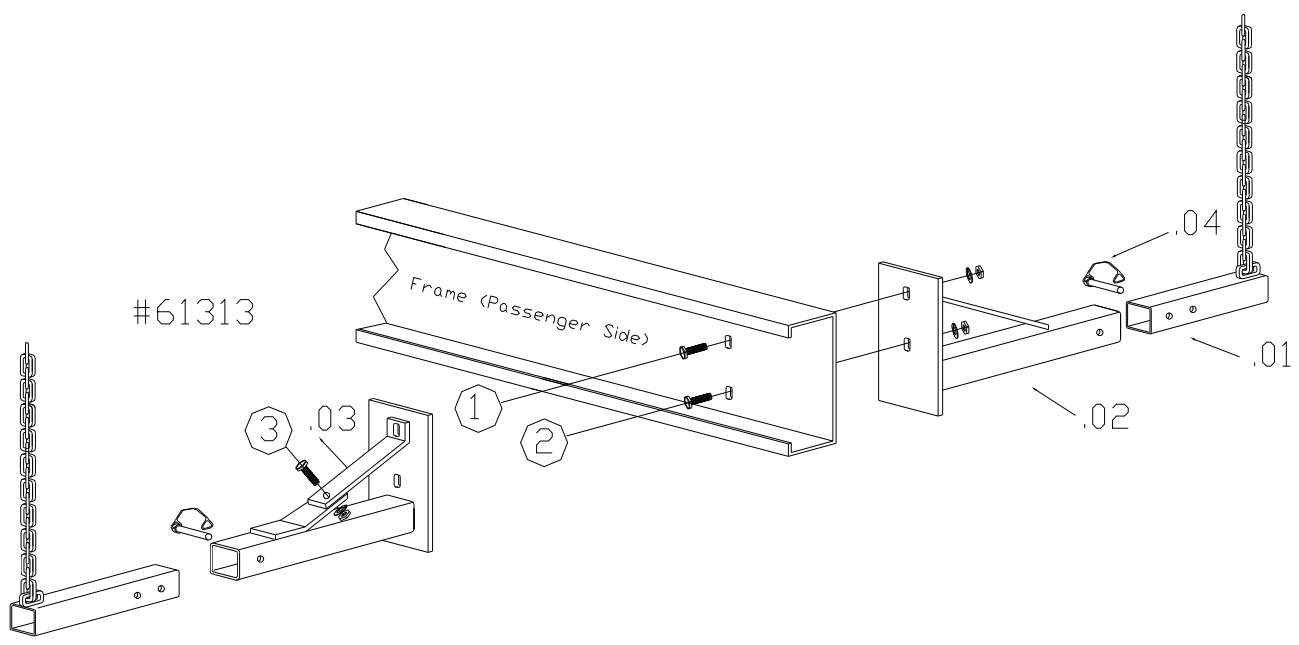
Parts List		Contents of Bolt Pack # 61311/B		Tools Required
2	Main Body Part # 61311/MBU	2	Hex Bolt 1/2 x 2, Grade 5, UNC, Plated	1/2" Socket or Wrench 100 FT/LB Torque Wrench
2	Tube Chains 12" # 63101	6	Hex Nut 1/2, Grade 5, UNC, Plated	
1	Bolt Pack 61311/B	6	Flat Washer 1/2, Plated	
1	DSP Warranty Card	6	Lock Washer 1/2, Grade 5, UNC, Plated	
1	Instructions T61000 Series	2	# 91110 Reinforcement Spacer	
		2	Quick Pin Round 3/8 x 2-1/4	
		4	CT Specialty J Bolt # 63107	
Shipping Weight	25 lbs. 11.4 kg.			No Drill Application

- 1) Locate hole in frame rail approximately 10" from rear of cab area. Place 1/2" x 2" hex bolt and reinforcement spacer # 91110 in the existing hole and fasten tiedown loosely into place for time being.
- 2) Using the Specialty Bolts supplied install them on the lower edge of the frame rail clamping the tiedown into position.
- 3) Tighten all mounting fasteners to the correct torque specifications listed below.

Bolt Size	Grade 5 Torque	Metric	Grade 8.8 Torque
3/8	30 Ft. Lb	8 mm	18 Ft. Lb.
7/16	54 Ft. Lb	10 mm	36 Ft. Lb.
1/2	72 Ft. Lb.	12 mm	75 Ft. Lb.
5/8	150 Ft. Lb	14 mm	103 Ft. Lb.
3/4	245 Ft. Lb	Maximum torque for weld or weld nuts is 38 FT/Lb	

Warning: Check Fasteners annually or before usage, if the Tiedown is damaged replacement may be necessary.
DO NOT drill or alter this product. This product is only intended for the application listed above, see vehicle owner's manual for maximum camper capacity (GVWR). This product is intended for usage with the correct towing accessories and not to be used with tow ropes, cables, chains or any type of stretch or elastic rope.

61313
 Hitch application
Chev/GMC Front Mount Camper Tiedown
 For specific fit, see current fit list
 in our catalogue at www.dsphitches.com



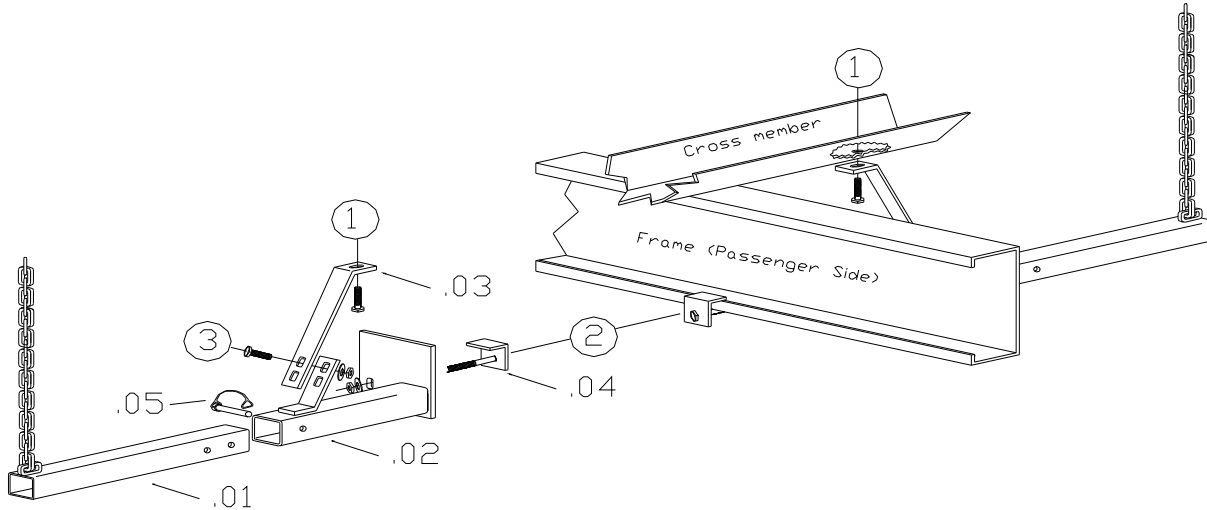
Parts List		Contents of Bolt Pack # 61313/B		Tools Required
1	Main Body Part #61313/MBD	5	Hex Bolt 1/2 x 1 3/4, Grade 5, UNC, Plated	3/4" Socket or Wrench 100 FT/LB Torque Wrench
1	Main Body Part #61313/MBP	5	Lock Washer 1/2, Grade 5, UNC, Plated	
2	Tube Chains 12" #63101	5	Flat Washer 1/2, Plated	
1	Sub Bracket # 61313/SBD	5	Hex Nut 1/2, Grade 5, UNC, Plated	
1	Bolt Pack 61313/B	2	Quick Pin Round 3/8 x 2-1/4	
1	DSP Warranty Card			
1	Instructions T6000 Series			
Shipping Weight	31.2 lbs 14.2 kg			Drill Application

- 1) Locate the area between the cab and the boxmounts. Position the Tiedown in the area of this location. Some models have two holes at this location, some don't so you may have to drill one or two holes per side.
- 2) Repeat step 1 for oppsite side.
- 3) Tighten all mounting fasteners to the correct torque specifications listed below.

Bolt Size	Grade 5 Torque	Metric	Grade 8.8 Torque
3/8	30 Ft. Lb	8 mm	18 Ft. Lb.
7/16	54 Ft. Lb	10 mm	36 Ft. Lb.
1/2	72 Ft. Lb.	12 mm	75 Ft. Lb.
5/8	150 Ft. Lb	14 mm	103 Ft. Lb.
3/4	245 Ft. Lb	Maximum torque for weld or weld nuts is 38 FT/Lb	

Warning: Check Fasteners annually or before usage, if the Tiedown is damaged replacement may be necessary.
 DO NOT drill or alter this product. This product is only intended for the application listed above, see vehicle owner's manual for maximum camper capacity (GVWR). This product is intended for usage with the correct towing accessories and not to be used with tow ropes, cables, chains or any type of stretch or elastic rope.

61314
 Hitch application
Chev/GMC Front Mount Camper Tiedown
 For specific fit, see current fit list
 in our catalogue at www.dsphitches.com



Parts List	Contents of Bolt Pack # 61314/B	Tools Required
1 Main Body Part # 61314/MBD 1 Main Body Part # 61314/MBP 2 Tube Chains 17" 63102 2 Sub Bracket DS 61314/SBU 1 Bolt Pack #61314/B 1 DSP Warranty Card 1 Instructions T61000 Series	2 J Bolt 63481 4 Flatwasher 1/2, Grade 5, UNC, Plated 2 Hex Bolt 1/2 x 1 1/2, Grade 5, UNC, Plated 4 Hex Nut 1/2, Grade 5, UNC, Plated 4 Lockwasher 1/2, Grade 5, UNC, Plated 2 Quick Pin Round 3/8 x 2-1/4	3/4" Socket or Wrench 100 FT/LB Torque Wrench
Shipping 32.4 lbs. Weight 14.73 kg.		No Drill Application

- 1) Locate hole in frame (1) as shown in diagram above. Remove the box fasteners and install the Sub Bracket # 61314/SBU, then reinstall the box fasteners.
- 2) Raise main body up to holes located in the Sub Bracket and line up with holes in main body. Install 1/2" x 1 1/2" Hex Bolt and Washer and Nut. (Leave loose) (To be tightened in step # 4)
- 3) Install the J - Bolt # 63841 around the bottom of the frame rail and install the main body. (shown in the diagram above).
- 4) Repeat steps 1 and 2 for passenger side.
- 5) Tighten all mounting fasteners to the correct torque specifications listed below.

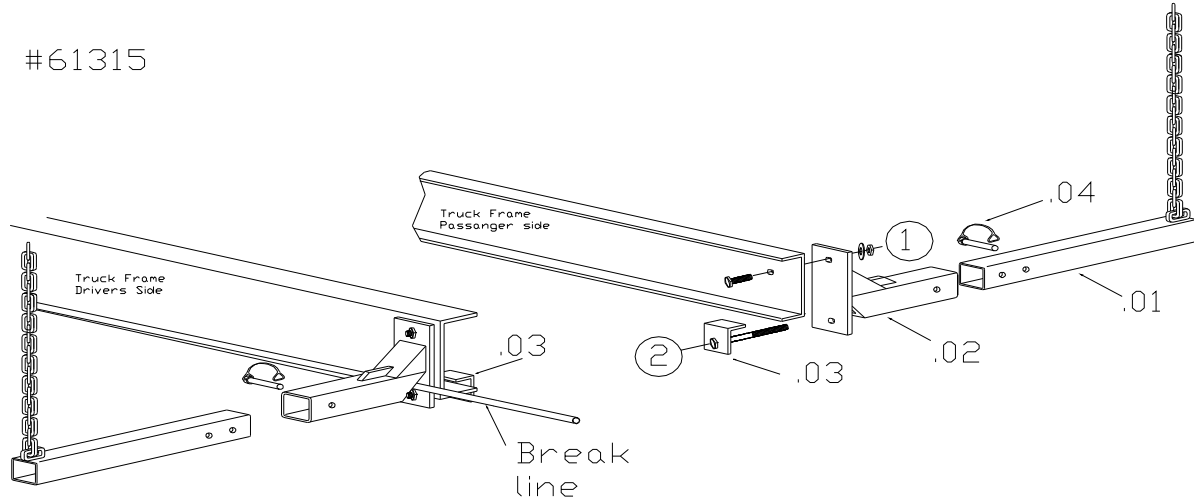
Bolt Size	Grade 5 Torque	Metric	Grade 8.8 Torque
3/8	30 Ft. Lb	8 mm	18 Ft. Lb.
7/16	54 Ft. Lb	10 mm	36 Ft. Lb.
1/2	72 Ft. Lb.	12 mm	75 Ft. Lb.
5/8	150 Ft. Lb	14 mm	103 Ft. Lb.
3/4	245 Ft. Lb	Maximum torque for weld or weld nuts is 38 FT/Lb	

Warning: Check Fastens annually or before usage, if the Tiedown is damaged replacement may be necessary.
 DO NOT drill or alter this product. This product is only intended for the application listed above.
 See vehicle owner's manual for maximum Camper capacity (GVWR). This product is intended for usage with the correct towing accessories and not to be used with tow ropes, cables, chains or any type of stretch or elastic rope.

DSP Hitches are manufactured by Diversified Steel Products MFG. LTD Edmonton, Alberta, Canada
 For more information on DSP and DSP products call 1-800-265-3377 or visit us at www.dsphitches.com

61315
Hitch application
Chev/GMC Front Mount Camper Tiedown
For specific fit, see current fit list in our catalogue at www.dsphitches.com

#61315



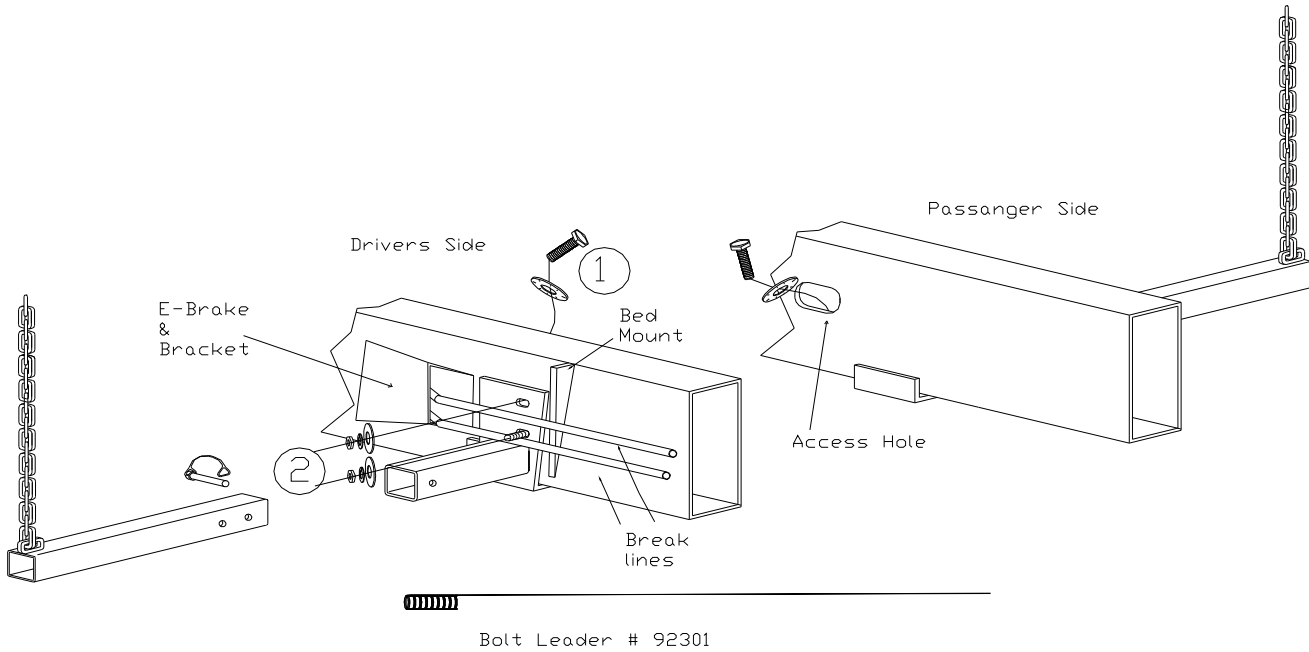
Parts List		Contents of Bolt Pack # 61315/B		Tools Required
2	Main Body Part # 61315/MBU	2	Carriage Bolt 1/2 x 1 3/4, Grade 5, UNC, Plated	3/4" Socket or Wrench 100 FT/LB Torque Wrench
2	Tube Chains 17" 63102	4	Hex Nut 1/2, Grade 5, UNC, Plated	
2	J Bolt Flat Head #63481	4	Flatwasher 1/2, UNC, Grade 5, Plated	
1	Bolt Pack #61315/B	4	Lockwasher 1/2", UNC, Grade 5, Plated	
1	DSP Warranty Card	2	# 91224 SQ Hole Reinforcement Spacers	
1	Instructions T6100 Series	2	Quick Pin Round 3/8 x 2-1/4	No Drill Application
1		1	# 92301 Bolt Leader 24"	
Shipping Weight	32.4 lbs. 14.73 kg.			

- 1) Locate the hole between the cab and the box mount. Using the provided Bolt Leader # 92301 fish the 1/2" x 1 3/4" Carriage Bolt and Reinforcement Spacer # 91224 into the hole.
- 2) Attach the Tiedown to this mounting point using 1/2" Washer and Hex Nut. (Leave loose for time being).
- 3) Using the supplied # 63841 J - Hook around the frame rail as (shown in diagram) and through tiedown .
- 4) Repeat steps 1 through 3 for passenger side.
- 5) Tighten all mounting fasteners to the correct torque specifications listed below.

Bolt Size	Grade 5 Torque	Metric	Grade 8.8 Torque
3/8	30 Ft. Lb	8 mm	18 Ft. Lb.
7/16	54 Ft. Lb	10 mm	36 Ft. Lb.
1/2	72 Ft. Lb.	12 mm	75 Ft. Lb.
5/8	150 Ft. Lb	14 mm	103 Ft. Lb.
3/4	245 Ft. Lb	Maximum torque for weld or weld nuts is 38 FT/Lb	

Warning: Check Fastens annually or before usage, if the Tiedown is damaged replacement may be necessary.
DO NOT drill or alter this product. This product is only intended for the application listed above.
See vehicle owner's manual for maximum Camper capacity (GVWR). This product is intended for usage with the correct towing accessories and not to be used with tow ropes, cables, chains or any type of stretch or elastic rope.

DSP Hitches are manufactured by Diversified Steel Products MFG. LTD Edmonton, Alberta, Canada
For more information on DSP and DSP products call 1-800-265-3377 or visit us at www.dsphitches.com



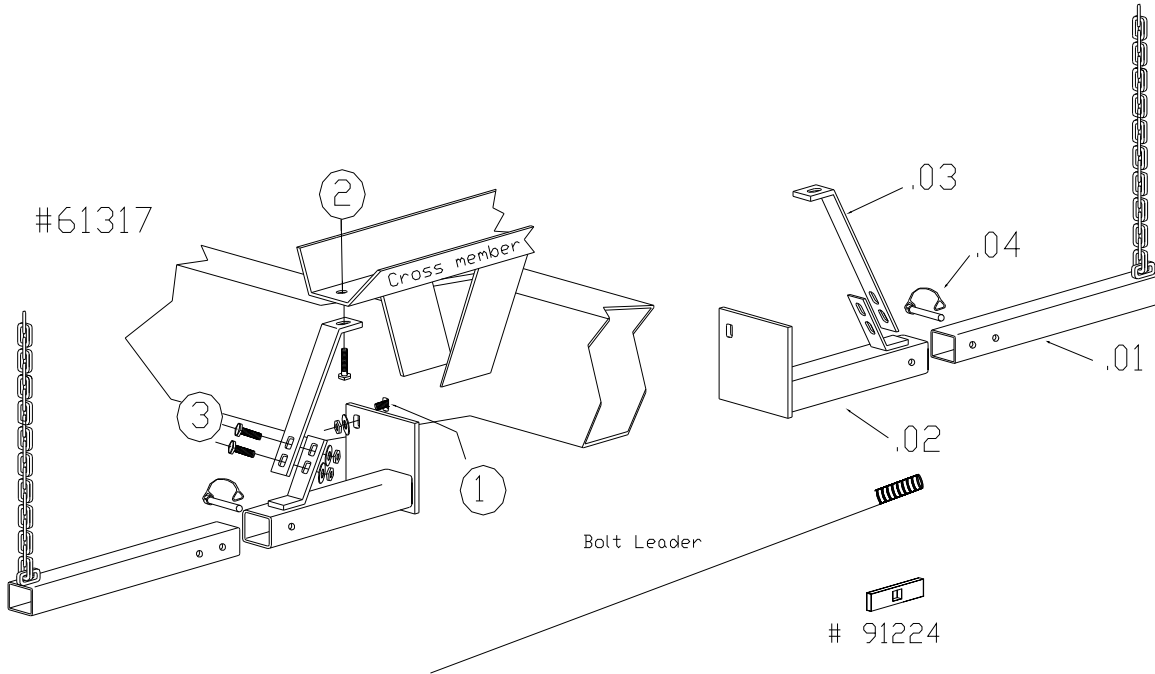
Parts List		Contents of Bolt Pack # 61316/B		Tools Required
1	Mainbody Part# 61316/MBP	2	Bolt Leaders 24"	11/16" Socket or Wrench 100 FT/LB Torque Wrench
1	Mainbody Part # 61316/MBD	4	Flat Washer 1/2", UNC, Grade 5, Plated	
2	Tube Chain 17" # 63102	4	Hex Bolts 1/2 X 1-1/2, UNC, Grade 5, Plated	No Drill Application
1	Bolt Pack 61316/B	4	Hex Nut 1/2", UNC, Grade 5, Plated	
1	DSP Warranty Card	4	Lock Washer 1/2", UNC, Grade 5, Plated	
Shipping	28.36 lbs.	2	Quick Pins	
Weight	12.89 kg.	4	Spacer #91110	

1. Locate tiedown and disconnect the emergency brake cable.
2. Install hex bolts with spacer #91110 using the supplied bolt leaders through existing holes. Leave the bolt leaders attached
3. Hold tiedown mainbody part onto holes on truck frame and fish bolt leader through hole, pulling bolts into place
4. Remove bolt leaders and fasten bolts with supplied flat washer and lock washer and nut. Tighten all mounting fasteners to the correct torque specification listed below.
5. Repeat on other side of truck.
6. Reconnect emergency brake cable.

Bolt Size	Grade 5 Torque	Metric	Grade 8.8 Torque
3/8	30 Ft. Lb	8 mm	18 Ft. Lb.
7/16	54 Ft. Lb	10 mm	36 Ft. Lb.
1/2	72 Ft. Lb.	12 mm	75 Ft. Lb.
5/8	150 Ft. Lb	14 mm	103 Ft. Lb.
3/4	245 Ft. Lb	Maximum torque for weld or weld nuts is 38 FT/Lb	

Warning: Check Fasteners annually or before usage, if the Tiedown is damaged replacement may be necessary.
DO NOT drill or alter this product. This product is only intended for the application listed above, see vehicle owner's manual for maximum camper capacity (GVWR). This product is intended for usage with the correct towing accessories and not to be used with tow ropes, cables, chains or any type of stretch or elastic rope.

This is a FULL TUBE FRAME installation!



Parts List		Contents of Bolt Pack # 61317/B		Tools Required	
1	Mainbody Part# 61317/MBP	2	Spacer 1/2" Sq Hole 2-3/4"Lx3/4"Wx1/4"Mat	11/16"	Socket or Wrench
1	Mainbody Part # 61317/MBD	1	Bolt Leader 24"	100	FT/LB Torque Wrench
2	Support Brackets	2	Carriage Bolt 1/2 x 2, Grade 5, UNC, Plated		
2	Tube Chain 17" # 63102	4	Hex Bolt 1/2-13 x 1-1/2, Grade 5, UNC, Plated		
1	Bolt Pack 61317/B	6	Lock Washer 1/2", UNC, Grade 5, Plated		
1	DSP Warranty Card	6	Flat Washer 1/2, Plated		
1	Instructions T61000 Series	6	Hex Nut 1/2", UNC, Grade 5, Plated		
Shipping	32.6 lbs.	2	Quick Pin		
Weight	14.82 kg.				No Drill Application

WARNING: Before grinding on the driver's side, locate fuel and electrical lines!

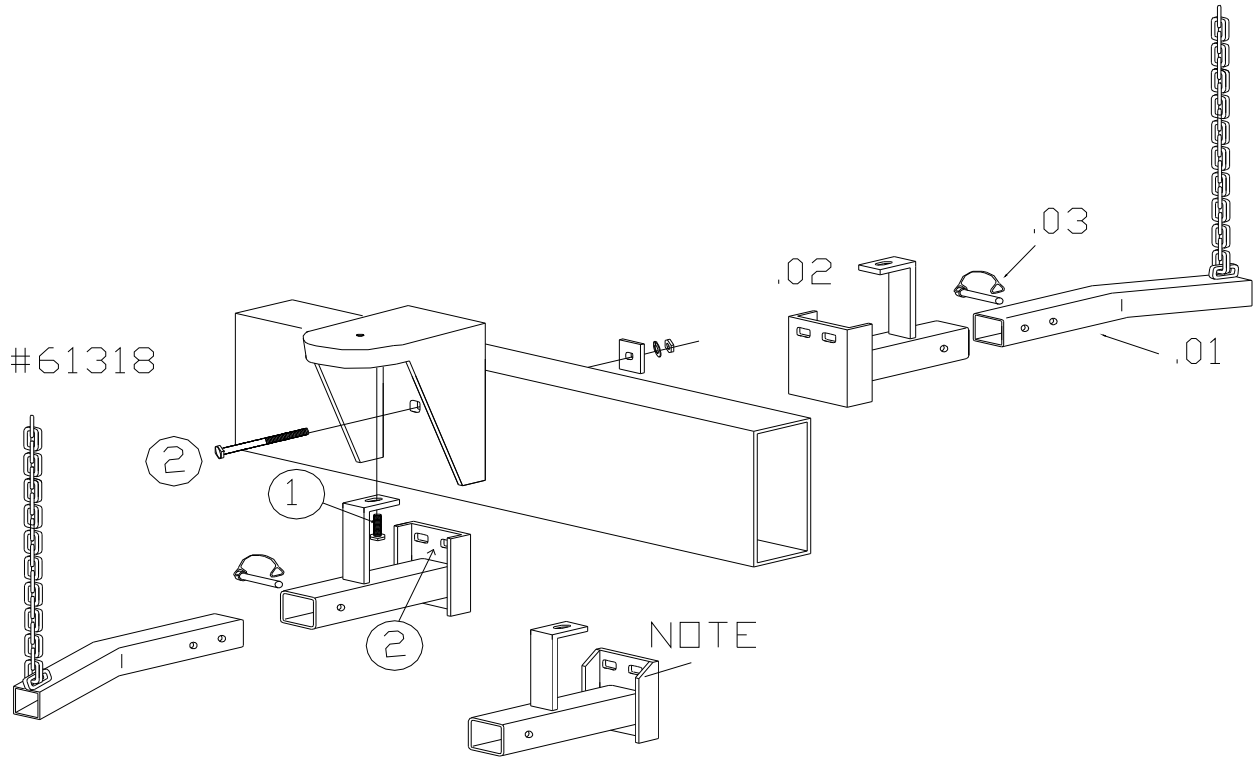
1. Locate Tiedown hole #1 (see pictured above) on the frame and enlarge hole with die grinder to be able to fishwire in 1/2 x 2 carriage bolt and space #91224 using the supplied bolt leader. Place the main body over the carriage bold and hold in place with flat washer, lock washer and hex nut. Handtighten.
2. Remove the box mount bolt from hole #2, install the crossmember support bracket using the same box mount bolt.
3. Attach the crossmember support bracket to the tiedown mainbody using 1/2 x 1-1/2" hex bolts, flat washer, lockwasher and hex nut. Handtighten.
4. Tighten all fasteners to torque specifications below.
5. Attach tube chain to main body using the supplied quick pin.
6. Repeat on other side.

Bolt Size	Grade 5 Torque	Metric	Grade 8.8 Torque
3/8	30 Ft. Lb	8 mm	18 Ft. Lb.
7/16	54 Ft. Lb	10 mm	36 Ft. Lb.
1/2	72 Ft. Lb.	12 mm	75 Ft. Lb.
5/8	150 Ft. Lb	14 mm	103 Ft. Lb.
3/4	245 Ft. Lb	Maximum torque for weld or weld nuts is 38 FT/Lb	

Warning: Check Fasteners annually or before usage, if the Tiedown is damaged replacement may be necessary.

DO NOT drill or alter this product. This product is only intended for the application listed above, see vehicle owner's manual for maximum camper capacity (GVWR). This product is intended for usage with the correct towing accessories and not to be used with tow ropes, cables, chains or any type of stretch or elastic rope.

This is a FULL TUBE FRAME installation!



Parts List		Contents of Bolt Pack # 61318/B	Tools Required
2	61318 MAIN BODY UNIVERSAL	2 Hex Bolt 1/2 x 5, Grade 5, UNC, Plated	3/4" Wrench 75 Ft.Lb. Torque Wrench
1	CT ANGLED TUBE CHAIN 17" DRIVER'S SIDE	2 Lock Washer 1/2, Grade 5, UNC, Plated	
1	CT ANGLED TUBE CHAIN 17" PASSENGER SIDE	2 Hex Nut 1/2, Grade 5, UNC, Plated	No Drill Application
1	Bolt Pack 61318/B	2 SPACER 1/2" SQUARE DIA 1 1/2" X 3"	
1	DSP Warranty Card	2 Quick Pin	
1	Instructions T61000 Series		
Shipping Weight	28.7 lbs. 13.05 kg.		

1. Locate and remove the bolt located in the cab support bracket. Lift the tiedown main body into place and re-install the cab support bracket bolt, making sure the rubber and retaining plate are wedged in-between the tiedown and the support bracket.
2. Line up one of the holes on the tiedown main body with the hole in the frame. Note: location of hole may vary with truck model). Insert 1/2 x 5" hex bolt through the tiedown frame, fasten with square spacer, 1/2" lockwasher and 1/2" hex nut.
4. Tighten all fasteners to torque specifications below.
5. Attach tube chain to main body using the supplied quick pin.
6. Repeat on other side.

Note: On early truck models some trimming may be required (up to 1") to avoid contact with the e-brake cable.

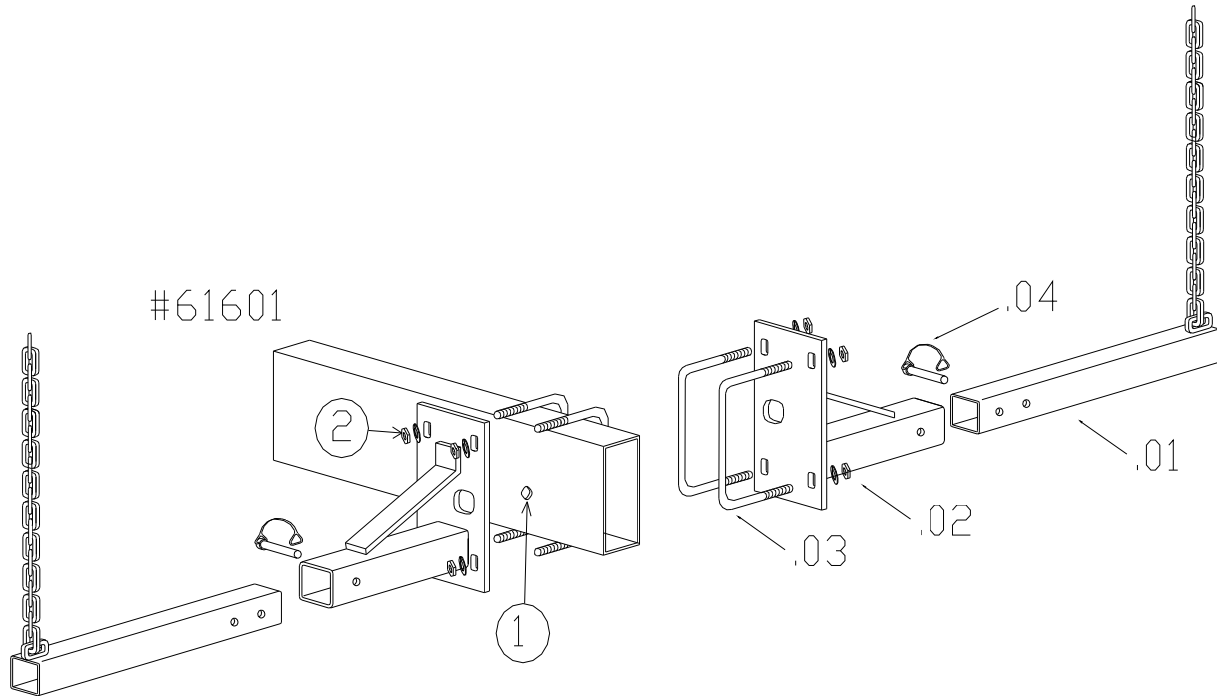
Bolt Size	Grade 5 Torque	Metric	Grade 8.8 Torque
3/8	30 Ft. Lb	8 mm	18 Ft. Lb.
7/16	54 Ft. Lb	10 mm	36 Ft. Lb.
1/2	72 Ft. Lb.	12 mm	75 Ft. Lb.
5/8	150 Ft. Lb	14 mm	103 Ft. Lb.
3/4	245 Ft. Lb	Maximum torque for weld or weld nuts is 38 FT/Lb	

Warning: Check Fasteners annually or before usage, if the Tiedown is damaged replacement may be necessary.

DO NOT drill or alter this product. This product is only intended for the application listed above, see vehicle owner's manual for maximum camper capacity (GVWR). This product is intended for usage with the correct towing accessories and not to be used with tow ropes, cables, chains or any type of stretch or elastic rope.

Dodge Front Mount Camper Tiedown

For specific fit, see current fit list
 in our catalogue at www.dsphitches.com



Parts List	Contents of Bolt Pack # 61601/B	Tools Required
Main Body D & P # 61601/MBU	8 Hex Nut 1/2, Grade 5, UNC, Plated	3/4" Socket or Wrench 100 FT/LB Torque Wrench
Tube chains 14" # 63102	8 Conical Washer 1/2 Style 8 STL Zinc	
U-Bolt SQ Plated: # 63401	2 Quick Pin Round 3/8 x 2-1/4	
Bolt pack # 61601/B	1 DSP Warranty Card	
Shipping 33.2 lbs.	1 Instructions T6000 Series	
Weight 15.1 kg.		Drill Application

- 1) Position camper tiedown between cab mount and box mount.
- 2) Fasten to the frame using the 1/2" U-Bolts provided. (Refer to diagram above)
- 3) Tighten all mounting fasteners to the correct torque specification listed below.

Bolt Size	Grade 5 Torque	Metric	Grade 8.8 Torque
3/8	30 Ft. Lb	8 mm	18 Ft. Lb.
7/16	54 Ft. Lb	10 mm	36 Ft. Lb.
1/2	72 Ft. Lb.	12 mm	75 Ft. Lb.
5/8	150 Ft. Lb	14 mm	103 Ft. Lb.
3/4	245 Ft. Lb	Maximum torque for weld or weld nuts is 38 FT/Lb	

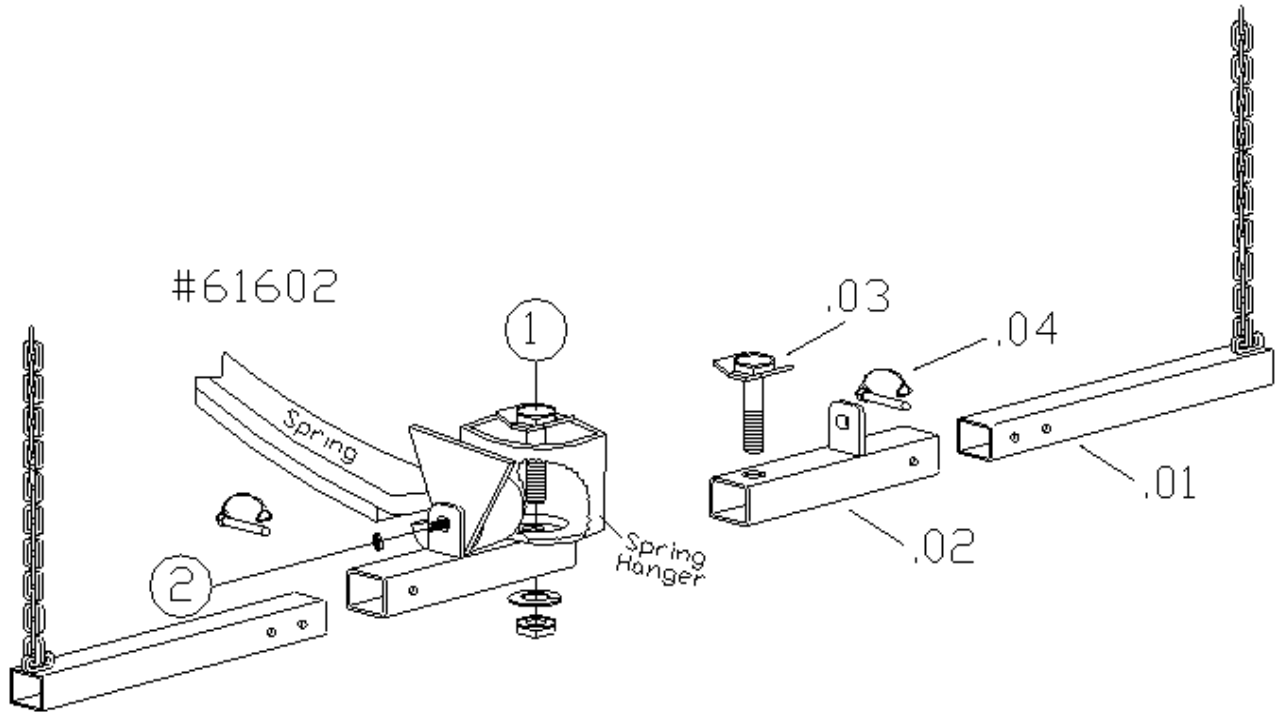
Warning: Check Fasteners annually or before usage, if the Tiedown is damaged replacement may be necessary.
 DO NOT drill or alter this product. This product is only intended for the application listed above, see vehicle owner's manual for maximum camper capacity (GVWR). This product is intended for usage with the correct towing accessories and not to be used with tow ropes, cables, chains or any type of stretch or elastic rope.

61602

Hitch application

Dodge Front Mount Camper Tiedown

For specific fit, see current fit list
 in our catalogue at www.dsphitches.com



Parts List	Contents of Bolt Pack # 61602/B	Tools Required
2 61602 MAIN BODY DS/PS 2 CT TUBE CHAIN 17" 1 Bolt Pack # 61602/B	2 Hex Nut 3/4", Grade 5, UNC, Plated 2 Lock Washer 3/4, Grade 5, Plated 2 Quick Pin Round 3/8 x 2-1/4 2 T BOLT 3/4 x 3-1/4 COATED 1 DSP Warranty Card 1 Instructions T6000 Series	1 1/8" Socket or Wrench 15/16" Socket or Wrench 100 FT/LB Torque Wrench
Shipping Weight 22.8 lbs. 10.4 kg.		No Drill Application

- 1) Locate front spring hanger bolt (2) (shown in diagram). Remove the nut from the stud bolt and place tiedown over bolt and reinstall the nut.
- 2) Locate the hole in the bottom of the spring hanger and place the specialty t-bolt in that location through the tiedown and install the lock washer and nut provided.
- 3) Repeat steps 1 and 2 for opposite side.
- 4) Tighten all mounting fasteners to their correct torque specifications listed below.

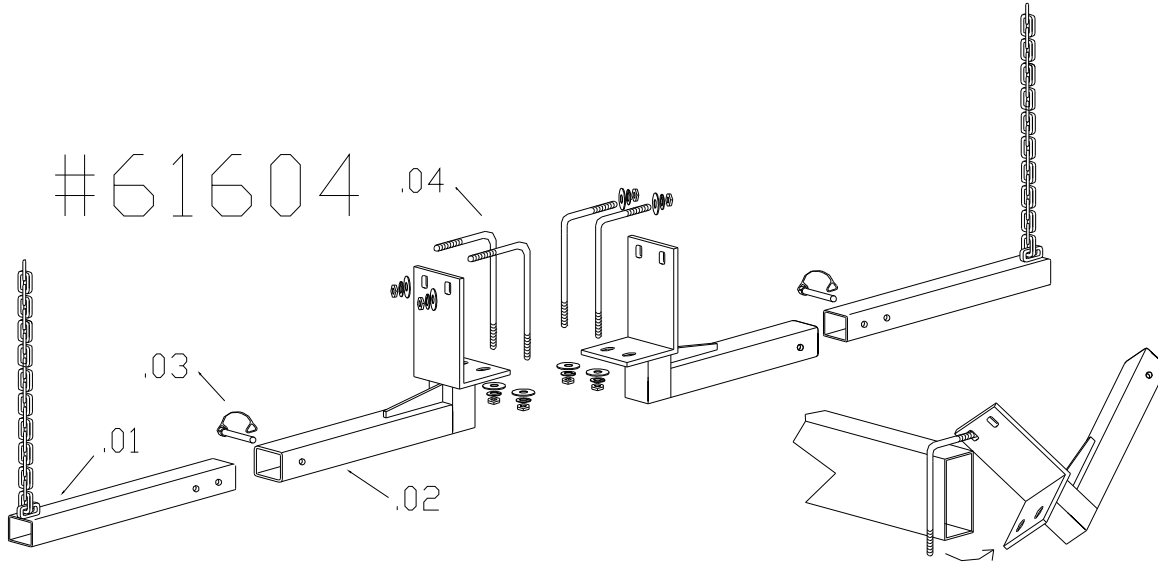
Bolt Size	Grade 5 Torque	Metric	Grade 8.8 Torque
3/8	30 Ft. Lb	8 mm	18 Ft. Lb.
7/16	54 Ft. Lb	10 mm	36 Ft. Lb.
1/2	72 Ft. Lb.	12 mm	75 Ft. Lb.
5/8	150 Ft. Lb	14 mm	103 Ft. Lb.
3/4	245 Ft. Lb	Maximum torque for weld or weld nuts is 38 FT/Lb	

Warning: Check Fastens annually or before usage, if the Tiedown is damaged replacement may be necessary.
 DO NOT drill or alter this product. This product is only intended for the application listed above.
 See vehicle owner's manual for maximum Camper capacity (GVWR). This product is intended for usage with the correct towing accessories and not to be used with tow ropes, cables, chains or any type of stretch or elastic rope.

DSP Hitches are manufactured by Diversified Steel Products MFG. LTD Edmonton, Alberta, Canada
 For more information on DSP and DSP products call 1-800-265-3377 or visit us at www.dsphitches.com

Dodge Front Mount Camper Tiedown

For specific fit, see current fit list in our catalogue at www.dsphitches.com



Parts List		Contents of Bolt Pack # 61604/B		Tools Required
2	Mainbody Part# 61604/MBU	4	Hex Nut 1/2", UNC, Grade 5, Plated	3/4" Socket or Wrench 100 FT/LB Torque Wrench
2	CT ANGLED TUBE CHAIN 17"	4	Lock Washer 1/2", UNC, Grade 5, Plated	
1	Bolt Pack 61604/B	4	Flat Washer 1/2, Plated	
4	L BOLT for 61604	2	Quick Pins	
1	DSP Warranty Card			
1	Instructions T61000 Series			
Shipping Weight	39.2 lbs. 17.82 kg.			No Drill Application

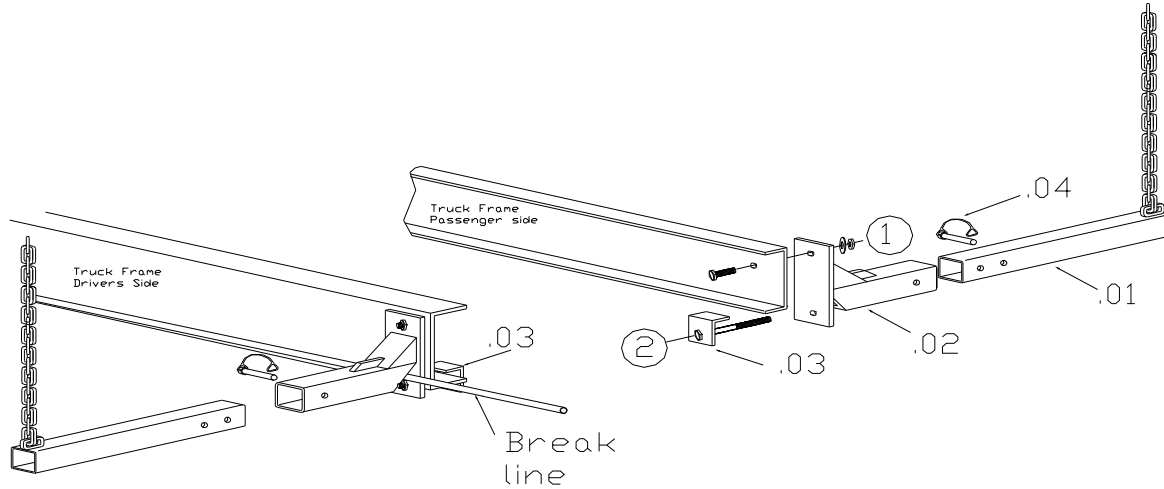
1. Locate an obstacle free area on the frame, ideally between the cab and the truck box
2. Install the tiedown on the passenger side first to become familiar with install by placing the L-Bolt onto the frame and hooking the mainbody into place as shown above. Secure in place with 1/2 flat washer, lock washer and nut. Hand tighten.
3. Repeat on driver's side. Important: L-Bolt MUST be placed between the brake, electrical or hydraulic lines found on the inside of the frame. Lift mainbody into place and secure with flat washer, lock washer and nut. Hand tighten.
4. Check if both mainbodies are located evenly on the frame. Adjust if necessary.
5. Tighten all fasteners to torque specifications below.

Bolt Size	Grade 5 Torque	Metric	Grade 8.8 Torque
3/8	30 Ft. Lb	8 mm	18 Ft. Lb.
7/16	54 Ft. Lb	10 mm	36 Ft. Lb.
1/2	72 Ft. Lb.	12 mm	75 Ft. Lb.
5/8	150 Ft. Lb	14 mm	103 Ft. Lb.
3/4	245 Ft. Lb	Maximum torque for weld or weld nuts is 38 FT/Lb	

Warning: Check Fasteners annually or before usage, if the Tiedown is damaged replacement may be necessary.
 DO NOT drill or alter this product. This product is only intended for the application listed above, see vehicle owner's manual for maximum camper capacity (GVWR). This product is intended for usage with the correct towing accessories and not to be used with tow ropes, cables, chains or any type of stretch or elastic rope.

Toyota Front Mount Camper Tiedown

For specific fit, see current fit list
in our catalogue at www.dsphitches.com



Parts List	Contents of Bolt Pack # 63515	Tools Required
1 Main Body Driver #61881/MBD 1 Main Body Passenger #61881/MBP 2 Tube Chains 17" # 63102 1 Bolt Pack 61881/B 1 DSP Warranty Card 1 Instructions T61000 Series	2 J BOLT FLAT HEAD 1/2 x 3-3/4 COATED 2 Hex Bolt 1/2 x 1 3/4, Grade 5, UNC, Plated 4 Hex Nut 1/2, Grade 5, UNC, Plated 4 Lock Washer, 1/2", Grade 5, UNC, Plated 2 Quick Pin Round 3/8 x 2-1/4	3/4" Socket or Wrench 100 FT/LB Torque Wrench
Shipping 24.29 lbs. Weight 11.04 kg.		No Drill Application

- 1) Locate hole in frame rail approximately 10" from cab. Place hex bolt into hole and hand tighten with fasteners provided.
- 2) Using specialty J bolt install Tiedown through other hole and fasten with supplied lock washer and nuts.
- 3) Tighten all mounting fasteners to the correct torque specifications listed below.

Bolt Size	Grade 5 Torque	Metric	Grade 8.8 Torque
3/8	30 Ft. Lb	8 mm	18 Ft. Lb.
7/16	54 Ft. Lb	10 mm	36 Ft. Lb.
1/2	72 Ft. Lb.	12 mm	75 Ft. Lb.
5/8	150 Ft. Lb	14 mm	103 Ft. Lb.
3/4	245 Ft. Lb	Maximum torque for weld or weld nuts is 38 FT/Lb	

Warning: Check Fastens annually or before usage, if the Tiedown is damaged replacement may be necessary.

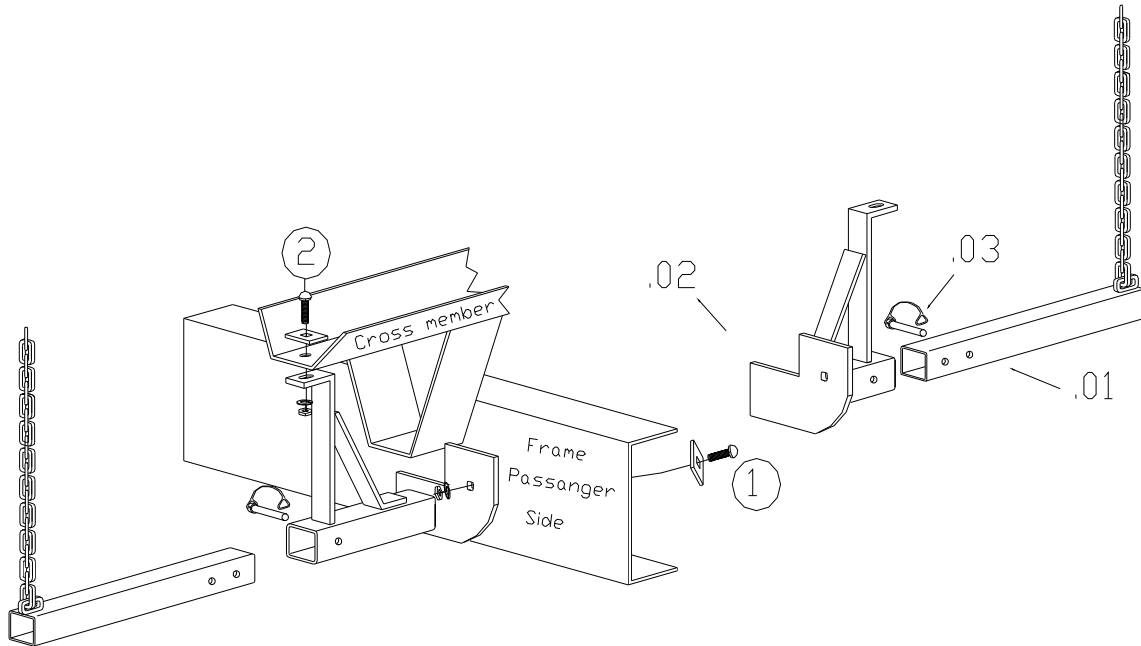
DO NOT drill or alter this product. This product is only intended for the application listed above.

See vehicle owner's manual for maximum Camper capacity (GVWR). This product is intended for usage with the correct towing accessories and not to be used with tow ropes, cables, chains or any type of stretch or elastic rope.

DSP Hitches are manufactured by Diversified Steel Products MFG. LTD Edmonton, Alberta, Canada
For more information on DSP and DSP products call 1-800-265-3377 or visit us at www.dsphitches.com

Nissan Front Mount Camper Tiedown

For specific fit, see current fit list
in our catalogue at www.dsphitches.com



Parts List		Contents of Bolt Pack # 61891/B		Tools Required	
1	Main Body Driver 61891/MBD	4	Carriage Bolts 1/2 x 2", Grade 5, UNC, Plated	3/4" Socket or Wrench 100 FT/LB Torque Wrench	
1	Main Body Passenger 61891/MBP	4	Hex Nuts, 1/2", Grade 5, UNC, Plated		
2	Tube Chains 17" # 63102	4	Lock Washer, 1/2", Grade 5, UNC, Plated		
1	Bolt Pack #61891/B	2	Quick Pin Round 3/8 x 2-1/4		
1	DSP Warranty Card	4	Spacer 1/2" Square Dia 1-1/2"x1-1/2" #91120		
1	Instructions T61000 Series				
Shipping Weight	29.2 lbs. 13.3 kg.				

- 1) Locate hole in frame rail approximately 10" from cab . Place 1/2" x 2" Carriage Bolt and Reinforcement Spacer #91120 in the existing hole and fasten Tiedown loosely into place for time being.
- 2) Using the remaining Carriage Bolts supplied install Tiedown onto the crossmember and fasten with supplied lock washer and nuts.
- 3) Tighten all mounting fasteners to the correct torque specifications listed below.

Bolt Size	Grade 5 Torque	Metric	Grade 8.8 Torque
3/8	30 Ft. Lb	8 mm	18 Ft. Lb.
7/16	54 Ft. Lb	10 mm	36 Ft. Lb.
1/2	72 Ft. Lb.	12 mm	75 Ft. Lb.
5/8	150 Ft. Lb	14 mm	103 Ft. Lb.
3/4	245 Ft. Lb	Maximum torque for weld or weld nuts is 38 FT/Lb	

Warning: Check Fastens annually or before usage, if the Tiedown is damaged replacement may be necessary.

DO NOT drill or alter this product. This product is only intended for the application listed above.

See vehicle owner's manual for maximum Camper capacity (GVWR). This product is intended for usage with the correct towing accessories and not to be used with tow ropes, cables, chains or any type of stretch or elastic rope.

DSP Hitches are manufactured by Diversified Steel Products MFG. LTD Edmonton, Alberta, Canada

For more information on DSP and DSP products call 1-800-265-3377 or visit us at www.dsphitches.com