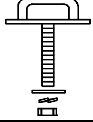
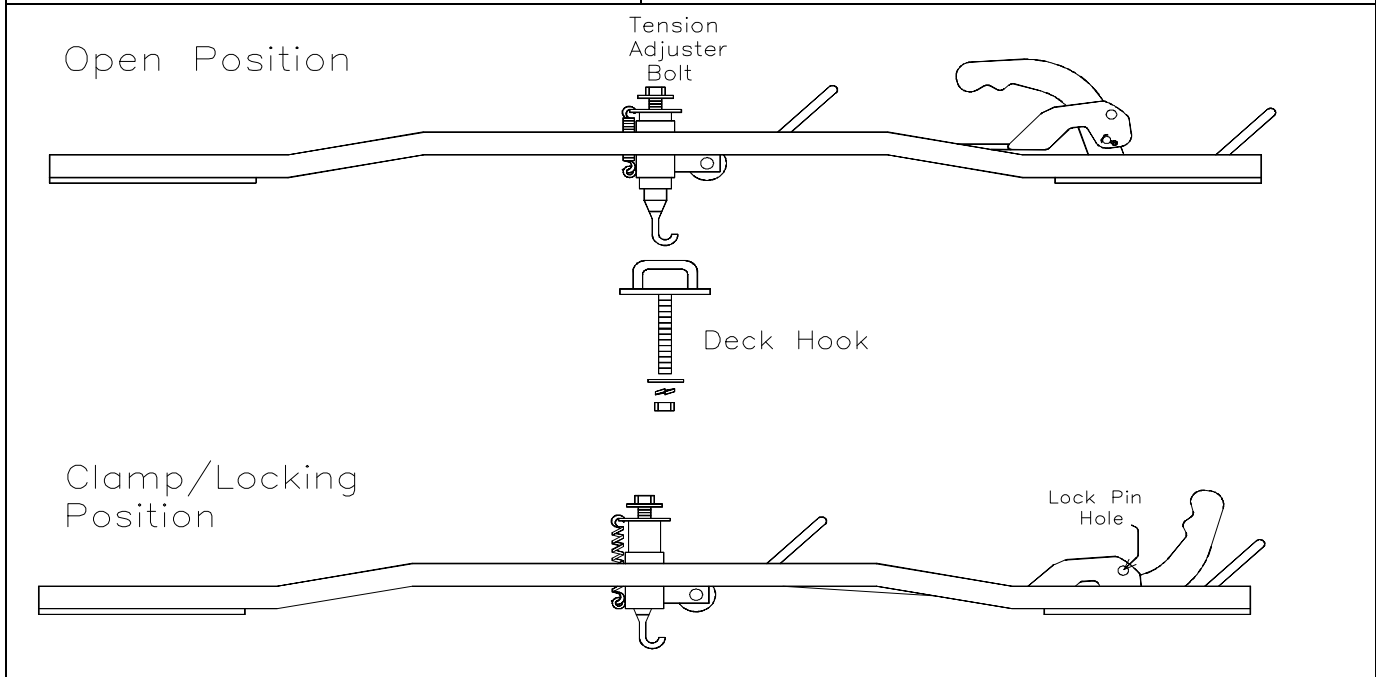




Diversified Steel Products Mfg. Ltd.
5645 - 92 Street
Edmonton, AB T6E 3A4 Canada
1 (800) 265-3377

39111

Screw Deck Hook (supplied)	Channel Deck Hook	DSP Snow mobile Clamp
	Coming soon	ATTENTION Due to the harsh weather conditions this product is exposed to, it must be maintained frequently by : Lubricating the chain and handle pivot point with standard chain lubrication oil.
		Nov. 30/09



Parts List	Contents of Bolt Pack 39111B	Tools Required
1 - Ski Tie down	1 Screw Deck Hook	3/4"Socket
1 - Bolt Pack # 39111B	1 Flat Washer 1/2, Plated	Ratchet or Impact gun
Shipping 18.5 lbs.	1 Lock Washer 1/2, Grade 5, Plated	100 FT/LB torque wrench
Weight 8.39 kg.	1 DSP Warranty Card	
NOTE: # 73801-1 Locking Pin included on Tiedown		

Instructions:

- 1) Remove old ski tie down, and using the existing 1/2" hole install the Deck Hook. If the hole is larger than 1/2" use large Washer and Locknut on the under side of the trailer & tighten. For channel mount trailers (eg. floe trailers) use the T type Deck Hook available at a local dealer. For additional security use Lock Pin or Padlock to secure handle.
- 2) Use the tension adjuster hex head in the middle of the clamp to adjust the required tension for the different ski heights. To find the required tension and ski height, put the handle in the upward position and hook the clamp into the Deck Hook. Pull the handle down into the engaging locked position. If the tension is too great, loosen by turning the adjuster counter clockwise. If it is too loose, turn clockwise to tighten. **Warning the clamp will exert 3 times than a regular wing nut tie down will. DO NOT over tighten to avoid damaging the skis.**
- 3) When the handle is down in the engaged position use the Locking Pin or Pad Lock to secure load.

1/2	72 Ft. Lb.	12 mm	75 Ft. Lb.
5/8	150 Ft. Lb	14 mm	103 Ft. Lb.
3/4	245 Ft. Lb	Maximum torque for weld or weld nuts is 38 FT/Lb	

Warning: Check Fasteners annually or before usage. If the product is damaged, replacement may be necessary.
The manufacturer assumes no responsibility for theft, injury, damage or loss arising from use of this product, however caused.
Lubricate the chain and handle pivot point frequently with standard chain oil
This product may be affected by u.v. light

DSP Hitches are manufactured by Diversified Steel Products Mfg. Ltd. Edmonton Alberta, Canada
For more information on DSP and DSP products call 1-800-265-3377 or visit use at www.dsphitches.com